

EXO1 Rabbit Polyclonal Antibody



CAB1941

Product Information

Size:

20uL, 50uL, 100uL, 200uL

Observed MW:

115kDa

Calculated MW:

89kDa/94kDa

Applications:

WB IHC IF

Reactivity:

Human

Protein Background

This gene encodes a protein with 5' to 3' exonuclease activity as well as an RNase H activity. It is similar to the *Saccharomyces cerevisiae* protein Exo1 which interacts with Msh2 and which is involved in mismatch repair and recombination. Alternative splicing of this gene results in three transcript variants encoding two different isoforms.

Immunogen information

Gene ID:

9156

Uniprot

Q9UQ84

Synonyms:

EXO1; HEX1; hExo1

Antibody Information

Recommended dilutions:

WB 1:500 - 1:2000 IHC 1:50
- 1:100 IF 1:50 - 1:200

Source:

Rabbit

Isotype:

IgG

Purification:

Affinity purification

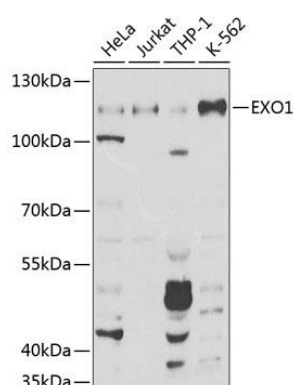
Immunogen:

Recombinant fusion protein containing a sequence corresponding to amino acids 601-846 of human EXO1 (NP_006018.4).

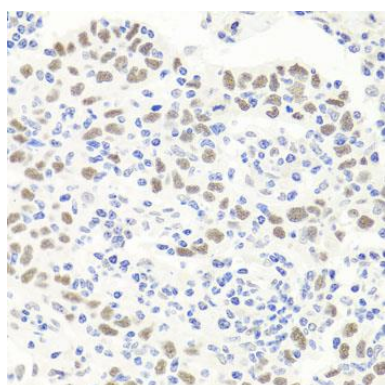
Storage:

Store at -20°C. Avoid freeze / thaw cycles. Buffer: PBS with 0.02% sodium azide, 50% glycerol, pH7.3.

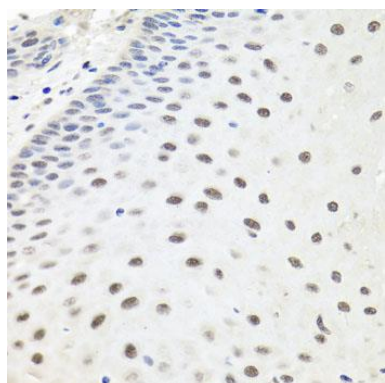
Product Images



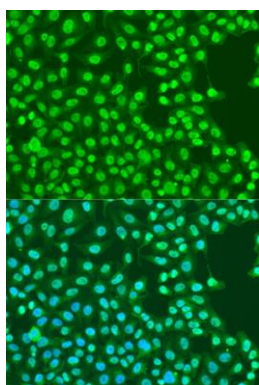
Western blot analysis of extracts of various cell lines, using EXO1 Antibody (CAB1941) at 1:1000 dilution. Secondary antibody: HRP Goat Anti-Rabbit IgG (H+L) (CABS014) at 1:10000 dilution. Lysates/proteins: 25ug per lane. Blocking buffer: 3% nonfat dry milk in TBST. Detection: ECL Basic Kit (CABM00020). Exposure time: 30s.



Immunohistochemistry of paraffin-embedded human esophageal cancer using EXO1 antibody (CAB1941) at dilution of 1:100 (40x lens).



Immunohistochemistry of paraffin-embedded human esophagus using EXO1 antibody (CAB1941) at dilution of 1:100 (40x lens).



Immunofluorescence analysis of U2OS cells using EXO1 antibody (CAB1941) at dilution of 1:100. Blue: DAPI for nuclear staining.