

POLI Rabbit Polyclonal Antibody



CAB1942

Product Information

Size:

20uL, 50uL, 100uL, 200uL

Observed MW:

85kDa

Calculated MW:

83kDa

Applications:

WB

Reactivity:

Human, Mouse

Protein Background

The protein encoded by this gene is an error-prone DNA polymerase involved in DNA repair. The encoded protein promotes DNA synthesis across lesions in the template DNA, which other polymerases cannot do. The encoded polymerase inserts deoxynucleotides across lesions and then relies on DNA polymerase zeta to extend the nascent DNA strand to bypass the lesion.

Immunogen information

Gene ID:

11201

Uniprot

Q9UNA4

Synonyms:

POLI; RAD30B; RAD3OB; eta2

Antibody Information

Recommended dilutions:

WB 1:500 - 1:2000

Source:

Rabbit

Isotype:

IgG

Purification:

Affinity purification

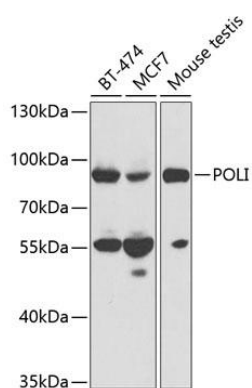
Immunogen:

Recombinant fusion protein containing a sequence corresponding to amino acids 50-350 of human POLI (NP_009126.2).

Storage:

Store at -20°C. Avoid freeze / thaw cycles. Buffer: PBS with 0.02% sodium azide, 50% glycerol, pH7.3.

Product Images



Western blot analysis of extracts of various cell lines, using POLI antibody (CAB1942) at 1:1000 dilution. Secondary antibody: HRP Goat Anti-Rabbit IgG (H+L) (CABS014) at 1:10000 dilution. Lysates/proteins: 25ug per lane. Blocking buffer: 3% nonfat dry milk in TBST.