

CD27 Rabbit Polyclonal Antibody



CAB1945

Product Information

Size:

20uL, 50uL, 100uL, 200uL

Observed MW:

50-55kDa

Calculated MW:

29kDa

Applications:

WB IHC IF

Reactivity:

Human, Mouse, Rat

Protein Background

The protein encoded by this gene is a member of the TNF-receptor superfamily. This receptor is required for generation and long-term maintenance of T cell immunity. It binds to ligand CD70, and plays a key role in regulating B-cell activation and immunoglobulin synthesis. This receptor transduces signals that lead to the activation of NF-kappaB and MAPK8/JNK. Adaptor proteins TRAF2 and TRAF5 have been shown to mediate the signaling process of this receptor. CD27-binding protein (SIVA), a proapoptotic protein, can bind to this receptor and is thought to play an important role in the apoptosis induced by this receptor.

Immunogen information

Gene ID:

939

Uniprot

P26842

Synonyms:

CD27; S152; S152.LPFS2; T14; TNFRSF7; Tp55; S152.LPFS2

Antibody Information

Recommended dilutions:

WB 1:500 - 1:2000 IHC 1:50
- 1:200 IF 1:50 - 1:200

Source:

Rabbit

Isotype:

IgG

Purification:

Affinity purification

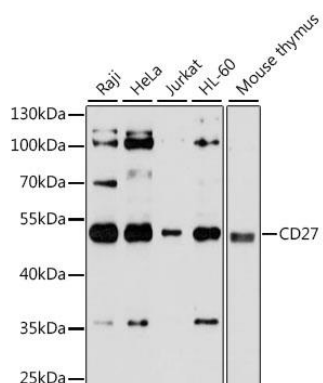
Immunogen:

Recombinant fusion protein containing a sequence corresponding to amino acids 20-191 of human CD27 (NP_001233.1).

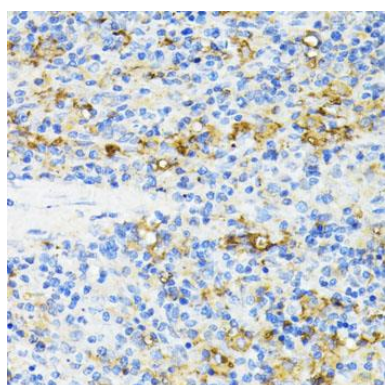
Storage:

Store at -20°C. Avoid freeze / thaw cycles. Buffer: PBS with 0.02% sodium azide, 50% glycerol, pH7.3.

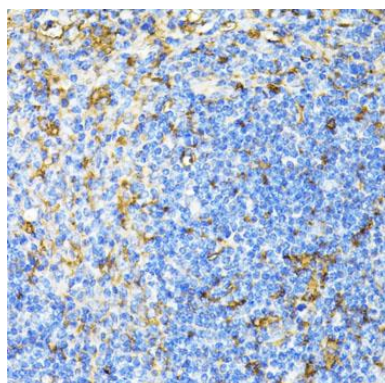
Product Images



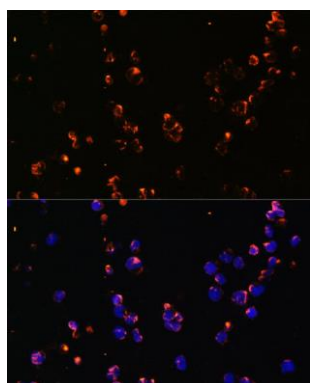
Western blot analysis of extracts of various cell lines, using CD27 antibody (CAB1945) at 1:3000 dilution. Secondary antibody: HRP Goat Anti-Rabbit IgG (H+L) (CABS014) at 1:10000 dilution. Lysates/proteins: 25ug per lane. Blocking buffer: 3% nonfat dry milk in TBST. Detection: ECL Basic Kit (CABM00020). Exposure time: 90s.



Immunohistochemistry of paraffin-embedded rat spleen using CD27 antibody (CAB1945) at dilution of 1:100 (40x lens).



Immunohistochemistry of paraffin-embedded mouse spleen using CD27 antibody (CAB1945) at dilution of 1:100 (40x lens).



Immunofluorescence analysis of Jurkat cells using CD27 antibody (CAB1945) at dilution of 1:100. Blue: DAPI for nuclear staining.