

Smad5 Rabbit Polyclonal Antibody



CAB1947

Product Information

Size:

20uL, 50uL, 100uL, 200uL

Observed MW:

55kDa

Calculated MW:

52kDa

Applications:

WB IHC IF

Reactivity:

Human, Mouse, Rat

Protein Background

The protein encoded by this gene is involved in the transforming growth factor beta signaling pathway that results in an inhibition of the proliferation of hematopoietic progenitor cells. The encoded protein is activated by bone morphogenetic proteins type 1 receptor kinase, and may be involved in cancer. Alternative splicing results in multiple transcript variants.

Immunogen information

Gene ID:

4090

Uniprot

Q99717

Synonyms:

DWFC; JV5-1; MADH5; SMAD5

Antibody Information

Recommended dilutions:

WB 1:500 - 1:2000 IHC 1:50
- 1:200 IF 1:50 - 1:200

Source:

Rabbit

Isotype:

IgG

Purification:

Affinity purification

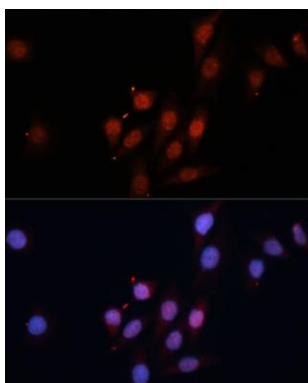
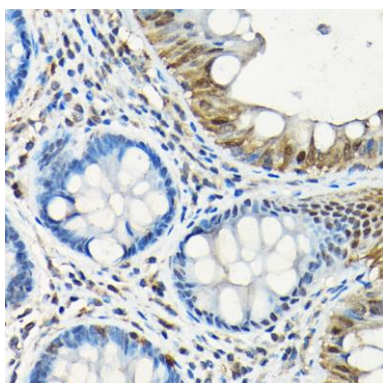
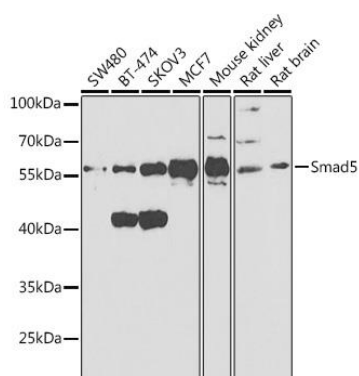
Immunogen:

Recombinant fusion protein containing a sequence corresponding to amino acids 186-465 of human Smad5 (NP_001001420.1).

Storage:

Store at -20°C. Avoid freeze / thaw cycles. Buffer: PBS with 0.02% sodium azide, 50% glycerol, pH7.3.

Product Images



Western blot analysis of extracts of various cell lines, using Smad5 antibody (CAB1947) at 1:1000 dilution. Secondary antibody: HRP Goat Anti-Rabbit IgG (H+L) (CABS014) at 1:10000 dilution. Lysates/proteins: 25ug per lane. Blocking buffer: 3% nonfat dry milk in TBST. Detection: ECL Basic Kit (CABM00020). Exposure time: 90s.

Immunohistochemistry of paraffin-embedded human colon using Smad5 Rabbit pAb (CAB1947) at dilution of 1:150 (40x lens).

Immunofluorescence analysis of HeLa cells using Smad5 Polyclonal Antibody (CAB1947) at dilution of 1:100 (40x lens). Blue: DAPI for nuclear staining.