

PSMD10 Rabbit Polyclonal Antibody



CAB1949

Product Information

Size:

20uL, 50uL, 100uL, 200uL

Observed MW:

24kDa

Calculated MW:

16kDa/24kDa

Applications:

WB IHC IF

Reactivity:

Human, Mouse, Rat

Antibody Information

Recommended dilutions:

WB 1:500 - 1:2000 IHC 1:50
- 1:200 IF 1:50 - 1:200

Source:

Rabbit

Isotype:

IgG

Purification:

Affinity purification

Protein Background

This gene encodes a subunit of the PA700/19S complex, which is the regulatory component of the 26S proteasome. The 26S proteasome complex is required for ubiquitin-dependent protein degradation. This protein is a non-ATPase subunit that may be involved in protein-protein interactions. Aberrant expression of this gene may play a role in tumorigenesis. Two transcripts encoding different isoforms have been described. Pseudogenes have been identified on chromosomes 3 and 20.

Immunogen information

Gene ID:

5716

Uniprot

O75832

Synonyms:

PSMD10; dJ889N15.2; p28; p28(GANK)

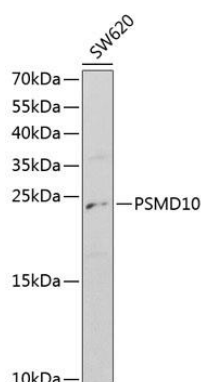
Immunogen:

Recombinant fusion protein containing a sequence corresponding to amino acids 1-226 of human PSMD10 (NP_002805.1).

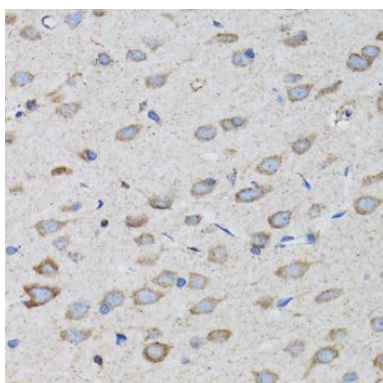
Storage:

Store at -20°C. Avoid freeze / thaw cycles. Buffer: PBS with 0.02% sodium azide, 50% glycerol, pH7.3.

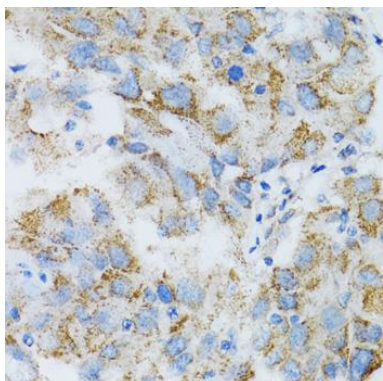
Product Images



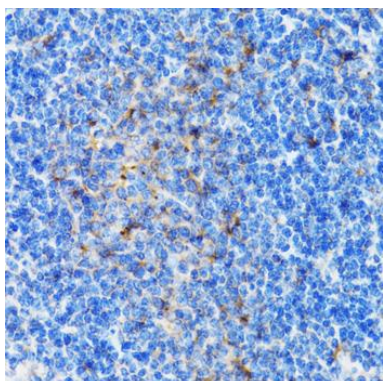
Western blot analysis of extracts of SW620 cells, using PSMD10 antibody (CAB1949) at 1:1000 dilution. Secondary antibody: HRP Goat Anti-Rabbit IgG (H+L) (CABS014) at 1:10000 dilution. Lysates/proteins: 25ug per lane. Blocking buffer: 3% nonfat dry milk in TBST.



Immunohistochemistry of paraffin-embedded rat brain using PSMD10 antibody (CAB1949) at dilution of 1:100 (40x lens).



Immunohistochemistry of paraffin-embedded human breast cancer using PSMD10 antibody (CAB1949) at dilution of 1:100 (40x lens).



Immunohistochemistry of paraffin-embedded mouse spleen using PSMD10 antibody (CAB1949) at dilution of 1:100 (40x lens).