

UBE2D1 Rabbit Polyclonal Antibody



CAB1951

Product Information

Size:

20uL, 50uL, 100uL, 200uL

Observed MW:

14kDa

Calculated MW:

16kDa

Applications:

WB IHC

Reactivity:

Human, Mouse, Rat

Antibody Information

Recommended dilutions:

WB 1:500 - 1:2000 IHC 1:50
- 1:200

Source:

Rabbit

Isotype:

IgG

Purification:

Affinity purification

Protein Background

The modification of proteins with ubiquitin is an important cellular mechanism for targeting abnormal or short-lived proteins for degradation. Ubiquitination involves at least three classes of enzymes: ubiquitin-activating enzymes, or E1s, ubiquitin-conjugating enzymes, or E2s, and ubiquitin-protein ligases, or E3s. This gene encodes a member of the E2 ubiquitin-conjugating enzyme family. This enzyme is closely related to a stimulator of iron transport (SFT), and is up-regulated in hereditary hemochromatosis. It also functions in the ubiquitination of the tumor-suppressor protein p53 and the hypoxia-inducible transcription factor HIF1alpha by interacting with the E1 ubiquitin-activating enzyme and the E3 ubiquitin-protein ligases. Two transcript variants encoding different isoforms have been found for this gene.

Immunogen information

Gene ID:

7321

Uniprot

P51668

Synonyms:

UBE2D1; E2(17)KB1; SFT; UBC4/5; UBCH5; UBCH5A

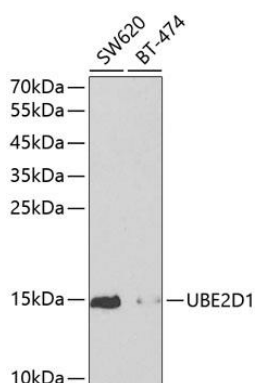
Immunogen:

Recombinant fusion protein containing a sequence corresponding to amino acids 1-147 of human UBE2D1 (NP_003329.1).

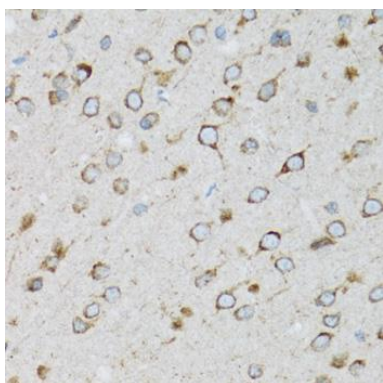
Storage:

Store at -20°C. Avoid freeze / thaw cycles. Buffer: PBS with 0.02% sodium azide, 50% glycerol, pH7.3.

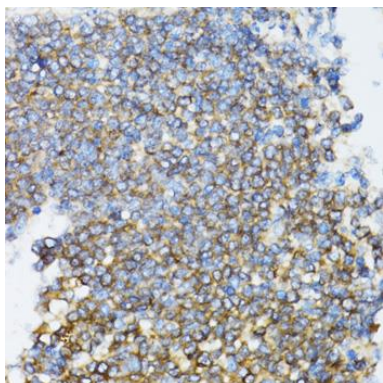
Product Images



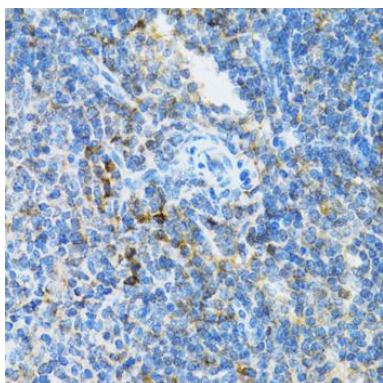
Western blot analysis of extracts of various cell lines, using UBE2D1 antibody (CAB1951) at 1:1000 dilution. Secondary antibody: HRP Goat Anti-Rabbit IgG (H+L) (CABS014) at 1:10000 dilution. Lysates/proteins: 25ug per lane. Blocking buffer: 3% nonfat dry milk in TBST. Detection: ECL Enhanced Kit (CABM00021).



Immunohistochemistry of paraffin-embedded rat brain using UBE2D1 antibody (CAB1951) at dilution of 1:100 (40x lens).



Immunohistochemistry of paraffin-embedded rat spleen using UBE2D1 antibody (CAB1951) at dilution of 1:100 (40x lens).



Immunohistochemistry of paraffin-embedded mouse spleen using UBE2D1 antibody (CAB1951) at dilution of 1:100 (40x lens).