

[KO Validated] Lamin A/C Rabbit Monoclonal Antibody
CAB19524



Product Information

Size:

20uL, 50uL, 100uL, 200uL

Observed MW:

62kDa/74kDa

Calculated MW:

62-74kDa

Applications:

WB IHC IF IP

Reactivity:

Human, Mouse, Rat

Protein Background

The nuclear lamina consists of a two-dimensional matrix of proteins located next to the inner nuclear membrane. The lamin family of proteins make up the matrix and are highly conserved in evolution. During mitosis, the lamina matrix is reversibly disassembled as the lamin proteins are phosphorylated. Lamin proteins are thought to be involved in nuclear stability, chromatin structure and gene expression. Vertebrate lamins consist of two types, A and B. Alternative splicing results in multiple transcript variants. Mutations in this gene lead to several diseases: Emery-Dreifuss muscular dystrophy, familial partial lipodystrophy, limb girdle muscular dystrophy, dilated cardiomyopathy, Charcot-Marie-Tooth disease, and Hutchinson-Gilford progeria syndrome.

Immunogen information

Gene ID:

4000

Uniprot

P02545

Antibody Information

Recommended dilutions:

WB 1:50000 - 1:200000 IHC

1:50 - 1:1000 IF 1:50 -

1:1000 IP 1:50 - 1:200

Source:

Rabbit

Synonyms:

LMNA; CDCD1; CDDC; CMD1A; CMT2B1; EMD2; FPL; FPLD; FPLD2;

HGPS; IDC; LDP1; LFP; LGMD1B; LMN1; LMNC; LMNL1; MADA;

PRO1; lamin; Lamin A/C

Immunogen:

Recombinant protein of human Lamin A/C.

Storage:

Store at -20°C. Avoid freeze / thaw cycles. Buffer: PBS with 0.02% sodium azide, 0.05% BSA, 50% glycerol, pH7.3.

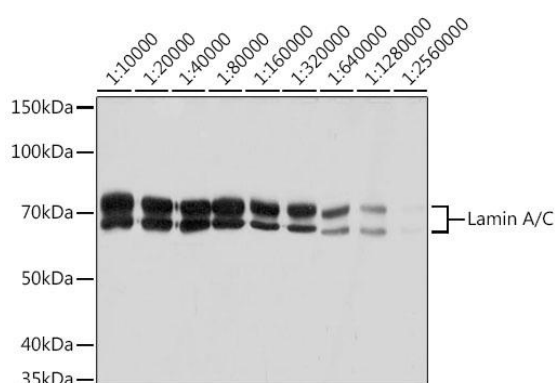
Isotype:

IgG

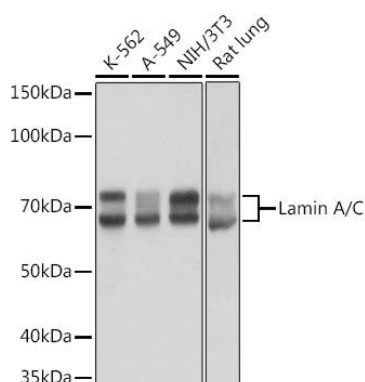
Purification:

Affinity purification

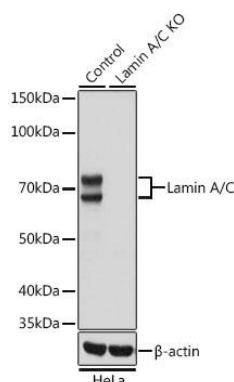
Product Images



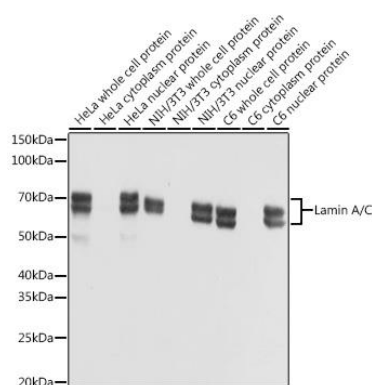
Western blot analysis of extracts of HeLa cells, using Lamin A/C antibody (CAB19524) at 1:10000-1:2560000 dilution. Secondary antibody: HRP Goat Anti-Rabbit IgG (H+L) (CABS014) at 1:10000 dilution. Lysates/proteins: 25ug per lane. Blocking buffer: 3% nonfat dry milk in TBST. Detection: ECL Basic Kit (CABM00020). Exposure time: 1s.



Western blot analysis of extracts of various cell lines, using Lamin A/C antibody (CAB19524) at 1:50000 dilution. Secondary antibody: HRP Goat Anti-Rabbit IgG (H+L) (CABS014) at 1:10000 dilution. Lysates/proteins: 25ug per lane. Blocking buffer: 3% nonfat dry milk in TBST. Detection: ECL Basic Kit (CABM00020). Exposure time: 1s.



Western blot analysis of extracts from normal (control) and Lamin A/C knockout (KO) HeLa cells, using Lamin A/C antibody (CAB19524) at 1:50000 dilution. Secondary antibody: HRP Goat Anti-Rabbit IgG (H+L) (CABS014) at 1:10000 dilution. Lysates/proteins: 25ug per lane. Blocking buffer: 3% nonfat dry milk in TBST. Detection: ECL Basic Kit (CABM00020). Exposure time: 1s.



Western blot analysis of extracts of various cell lines, using Lamin A/C antibody (CAB19524) at 1:10000 dilution. Secondary antibody: HRP Goat Anti-Rabbit IgG (H+L) (CABS014) at 1:10000 dilution. Lysates/proteins: 25ug per lane. Blocking buffer: 3% nonfat dry milk in TBST. Detection: ECL Basic Kit (CABM00020). Exposure time: 1s.