

# Aurora B Rabbit Monoclonal Antibody



**CAB19539**

---

## Product Information

### Size:

20uL, 50uL, 100uL, 200uL

### Observed MW:

39KDa

### Calculated MW:

39kDa

### Applications:

WB IF

### Reactivity:

Human, Rat

## Antibody Information

### Recommended dilutions:

WB 1:500 - 1:2000 IF 1:50 - 1:200

### Source:

Rabbit

### Isotype:

IgG

### Purification:

Affinity purification

## Protein Background

This gene encodes a member of the aurora kinase subfamily of serine/threonine kinases. The genes encoding the other two members of this subfamily are located on chromosomes 19 and 20. These kinases participate in the regulation of alignment and segregation of chromosomes during mitosis and meiosis through association with microtubules. A pseudogene of this gene is located on chromosome 8. Alternatively spliced transcript variants have been found for this gene. [provided by RefSeq, Sep 2015]

## Immunogen information

### Gene ID:

9212

### Uniprot

Q96GD4

### Synonyms:

AIK2; AIM-1; AIM1; ARK2; AurB; IPL1; PPP1R48; STK12; STK5; aurkb-sv1; aurkb-sv2; AURKB; Aurora B

### Immunogen:

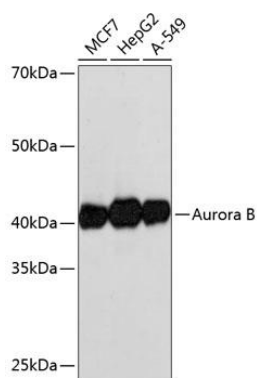
A synthesized peptide derived from human Aurora B.

### Storage:

Store at -20°C. Avoid freeze / thaw cycles. Buffer: PBS with 0.02% sodium azide, 0.05% BSA, 50% glycerol, pH7.3.

## Product Images

---



Western blot - Aurora B Rabbit mAb (CAB19539)