

CAB1954

## Product Information

### Size:

20uL, 50uL, 100uL, 200uL

### Observed MW:

110kDa

### Calculated MW:

91kDa/92kDa

### Applications:

WB IHC IF

### Reactivity:

Human, Mouse, Rat

## Antibody Information

### Recommended dilutions:

WB 1:500 - 1:2000 IHC 1:50  
- 1:200 IF 1:50 - 1:200

### Source:

Rabbit

### Isotype:

IgG

### Purification:

Affinity purification

## Protein Background

The protein encoded by this gene shares strong similarity with *Saccharomyces cerevisiae* protein Cdc27, and the gene product of *Schizosaccharomyces pombe* nuc 2. This protein is a component of the anaphase-promoting complex (APC), which is composed of eight protein subunits and is highly conserved in eukaryotic cells. This complex catalyzes the formation of cyclin B-ubiquitin conjugate, which is responsible for the ubiquitin-mediated proteolysis of B-type cyclins. The protein encoded by this gene and three other members of the APC complex contain tetratricopeptide (TPR) repeats, which are important for protein-protein interactions. This protein was shown to interact with mitotic checkpoint proteins including Mad2, p55CDC and BUBR1, and it may thus be involved in controlling the timing of mitosis. Alternative splicing of this gene results in multiple transcript variants. Related pseudogenes have been identified on chromosomes 2, 22 and Y.

## Immunogen information

### Gene ID:

996

### Uniprot

P30260

### Synonyms:

CDC27; ANAPC3; APC3; CDC27Hs; D0S1430E; D17S978E; H-NUC;  
HNUC; NUC2

### Immunogen:

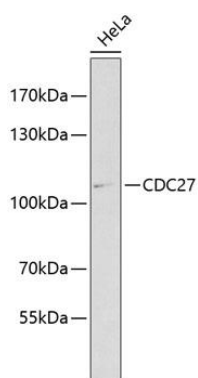
Recombinant fusion protein containing a sequence corresponding to amino acids 551-830 of human CDC27 (NP\_001107563.1).

### Storage:

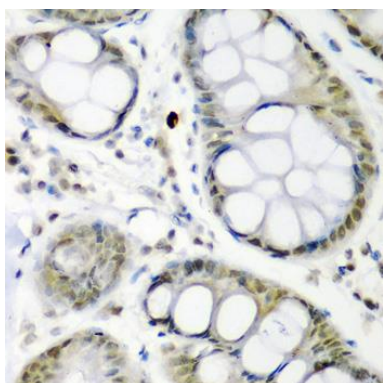
Store at -20°C. Avoid freeze / thaw cycles. Buffer: PBS with 0.02% sodium azide, 50% glycerol, pH7.3.

## Product Images

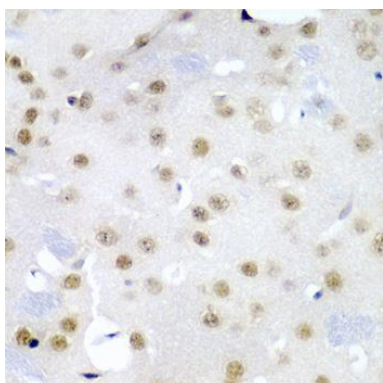
---



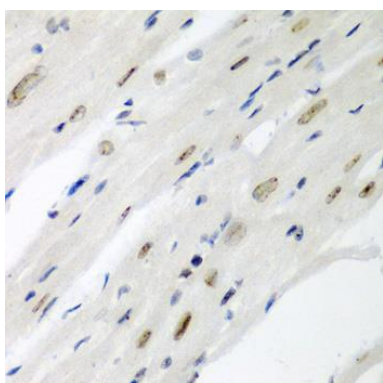
Western blot analysis of extracts of HeLa cells, using CDC27 antibody (CAB1954) at 1:1000 dilution. Secondary antibody: HRP Goat Anti-Rabbit IgG (H+L) (CABS014) at 1:10000 dilution. Lysates/proteins: 25ug per lane. Blocking buffer: 3% nonfat dry milk in TBST. Detection: ECL Enhanced Kit (CABM00021).



Immunohistochemistry of paraffin-embedded human colon carcinoma using CDC27 antibody (CAB1954) at dilution of 1:200 (40x lens).



Immunohistochemistry of paraffin-embedded mouse brain using CDC27 antibody (CAB1954) at dilution of 1:200 (40x lens).



Immunohistochemistry of paraffin-embedded mouse heart using CDC27 antibody (CAB1954) at dilution of 1:200 (40x lens).