

Ferritin Heavy Chain Rabbit Monoclonal Antibody



CAB19544

Product Information

Size:

20uL, 50uL, 100uL, 200uL

Observed MW:

21KDa

Calculated MW:

21kDa

Applications:

WB

Reactivity:

Human, Mouse, Rat

Protein Background

This gene encodes the heavy subunit of ferritin, the major intracellular iron storage protein in prokaryotes and eukaryotes. It is composed of 24 subunits of the heavy and light ferritin chains. Variation in ferritin subunit composition may affect the rates of iron uptake and release in different tissues. A major function of ferritin is the storage of iron in a soluble and nontoxic state. Defects in ferritin proteins are associated with several neurodegenerative diseases. This gene has multiple pseudogenes. Several alternatively spliced transcript variants have been observed, but their biological validity has not been determined. [provided by RefSeq, Jul 2008]

Immunogen information

Gene ID:

2495

Uniprot

P02794

Synonyms:

FHC; FTH; FTHL6; HFE5; PIG15; PLIF; Ferritin; FTH1

Antibody Information

Recommended dilutions:

WB 1:500 - 1:2000

Source:

Rabbit

Isotype:

IgG

Purification:

Affinity purification

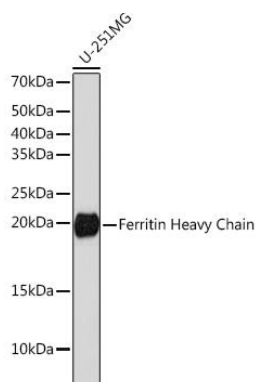
Immunogen:

A synthesized peptide derived from human Ferritin Heavy Chain.

Storage:

Store at -20°C. Avoid freeze / thaw cycles. Buffer: PBS with 0.02% sodium azide, 0.05% BSA, 50% glycerol, pH7.3.

Product Images



Western blot - Ferritin Heavy Chain Rabbit mAb (CAB19544)