

MEK1 Rabbit Monoclonal Antibody



CAB19565

Product Information

Size:

20uL, 50uL, 100uL, 200uL

Observed MW:

45KDa

Calculated MW:

45kDa

Applications:

WB IF

Reactivity:

Human, Mouse, Rat

Antibody Information

Recommended dilutions:

WB 1:500 - 1:2000 IF 1:50 - 1:200

Source:

Rabbit

Isotype:

IgG

Purification:

Affinity purification

Protein Background

The protein encoded by this gene is a member of the dual specificity protein kinase family, which acts as a mitogen-activated protein (MAP) kinase kinase. MAP kinases, also known as extracellular signal-regulated kinases (ERKs), act as an integration point for multiple biochemical signals. This protein kinase lies upstream of MAP kinases and stimulates the enzymatic activity of MAP kinases upon wide variety of extra- and intracellular signals. As an essential component of MAP kinase signal transduction pathway, this kinase is involved in many cellular processes such as proliferation, differentiation, transcription regulation and development. [provided by RefSeq, Jul 2008]

Immunogen information

Gene ID:

5604

Uniprot

Q02750

Synonyms:

CFC3; MAPKK1; MEK1; MKK1; PRKMK1; MAP2K1

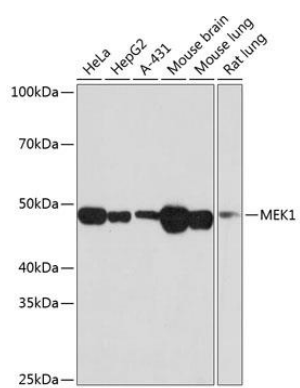
Immunogen:

A synthesized peptide derived from human MEK1.

Storage:

Store at -20°C. Avoid freeze / thaw cycles. Buffer: PBS with 0.02% sodium azide, 0.05% BSA, 50% glycerol, pH7.3.

Product Images



Western blot - MEK1 Rabbit mAb (CAB19565)