

KAP1 Rabbit Monoclonal Antibody



CAB19568

Product Information

Size:

20uL, 50uL, 100uL, 200uL

Observed MW:

110KDa

Calculated MW:

110kDa

Applications:

WB IHC IP

Reactivity:

Human, Mouse, Rat

Protein Background

The protein encoded by this gene mediates transcriptional control by interaction with the Kruppel-associated box repression domain found in many transcription factors. The protein localizes to the nucleus and is thought to associate with specific chromatin regions. The protein is a member of the tripartite motif family. This tripartite motif includes three zinc-binding domains, a RING, a B-box type 1 and a B-box type 2, and a coiled-coil region. [provided by RefSeq, Jul 2008]

Immunogen information

Gene ID:

10155

Uniprot

Q13263

Synonyms:

KAP1; PPP1R157; RNF96; TF1B; TIF1B; TRIM28

Antibody Information

Recommended dilutions:

WB 1:500 - 1:2000 IHC 1:50
- 1:200 IP 1:50 - 1:200

Source:

Rabbit

Isotype:

IgG

Purification:

Affinity purification

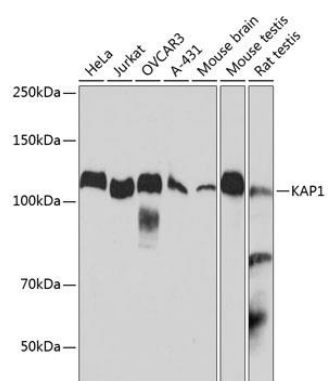
Immunogen:

A synthesized peptide derived from human KAP1.

Storage:

Store at -20°C. Avoid freeze / thaw cycles. Buffer: PBS with 0.02% sodium azide, 0.05% BSA, 50% glycerol, pH7.3.

Product Images



Western blot - KAP1 Rabbit mAb (CAB19568)