

# TRIM21 Rabbit Polyclonal Antibody



CAB1957

## Product Information

### Size:

20uL, 50uL, 100uL, 200uL

### Observed MW:

54kDa

### Calculated MW:

45kDa/54kDa

### Applications:

WB IHC IF IP

### Reactivity:

Human, Mouse, Rat

## Protein Background

This gene encodes a member of the tripartite motif (TRIM) family. The TRIM motif includes three zinc-binding domains, a RING, a B-box type 1 and a B-box type 2, and a coiled-coil region. The encoded protein is part of the RoSSA ribonucleoprotein, which includes a single polypeptide and one of four small RNA molecules. The RoSSA particle localizes to both the cytoplasm and the nucleus. RoSSA interacts with autoantigens in patients with Sjogren syndrome and systemic lupus erythematosus. Alternatively spliced transcript variants for this gene have been described but the full-length nature of only one has been determined.

## Immunogen information

### Gene ID:

6737

### Uniprot

P19474

### Synonyms:

TRIM21; RNF81; RO52; Ro/SSA; SSA; SSA1

## Antibody Information

### Recommended dilutions:

WB 1:500 - 1:2000 IHC 1:10  
- 1:100 IF 1:10 - 1:100 IP  
1:10 - 1:100

### Source:

Rabbit

### Isotype:

IgG

### Purification:

Affinity purification

### Immunogen:

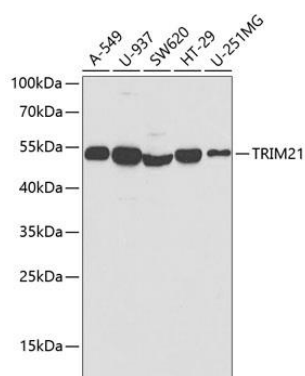
Recombinant fusion protein containing a sequence corresponding to amino acids 80-330 of human TRIM21 (NP\_003132.2).

### Storage:

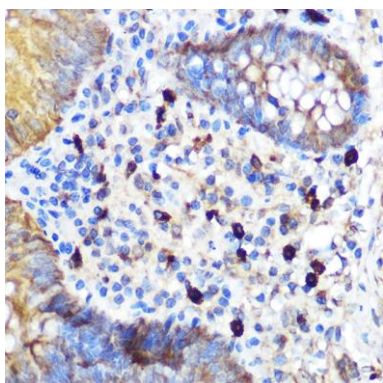
Store at -20°C. Avoid freeze / thaw cycles. Buffer: PBS with 0.02% sodium azide, 50% glycerol, pH7.3.

## Product Images

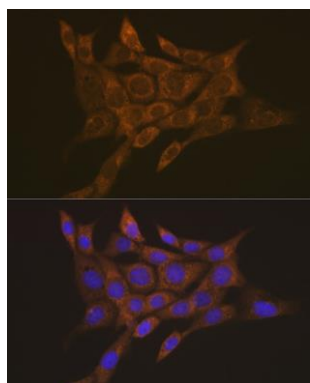
---



Western blot analysis of extracts of various cell lines, using TRIM21 antibody (CAB1957) at 1:1000 dilution. Secondary antibody: HRP Goat Anti-Rabbit IgG (H+L) (CABS014) at 1:10000 dilution. Lysates/proteins: 25ug per lane. Blocking buffer: 3% nonfat dry milk in TBST.



Immunohistochemistry of paraffin-embedded human appendix using TRIM21 Rabbit pAb (CAB1957) at dilution of 1:100 (40x lens).



Immunofluorescence analysis of NIH-3T3 cells using TRIM21 Rabbit pAb (CAB1957) at dilution of 1:100 (40x lens). Blue: DAPI for nuclear staining.