

**[KO Validated] KMT6 / EZH2 Rabbit Monoclonal Antibody**  
**CAB19577**



---

**Product Information**

**Size:**

20uL, 50uL, 100uL, 200uL

**Observed MW:**

98kDa

**Calculated MW:**

98kDa

**Applications:**

WB IHC

**Reactivity:**

Human, Mouse

**Antibody Information**

**Recommended dilutions:**

WB 1:500 - 1:2000 IHC 1:50 - 1:200

**Source:**

Rabbit

**Isotype:**

IgG

**Purification:**

Affinity purification

**Protein Background**

This gene encodes a member of the Polycomb-group (PcG) family. PcG family members form multimeric protein complexes, which are involved in maintaining the transcriptional repressive state of genes over successive cell generations. This protein associates with the embryonic ectoderm development protein, the VAV1 oncoprotein, and the X-linked nuclear protein. This protein may play a role in the hematopoietic and central nervous systems. Multiple alternatively spliced transcript variants encoding distinct isoforms have been identified for this gene. [provided by RefSeq, Feb 2011]

**Immunogen information**

**Gene ID:**

2146

**Uniprot**

Q15910

**Synonyms:**

ENX-1; ENX1; EZH1; EZH2b; KMT6; KMT6A; WVS; WVS2; EZH2; KMT6 / EZH2

**Immunogen:**

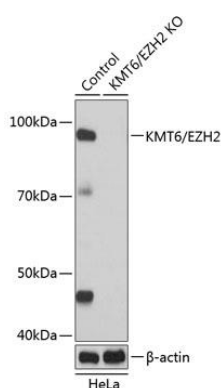
A synthesized peptide derived from human KMT6 / EZH2.

**Storage:**

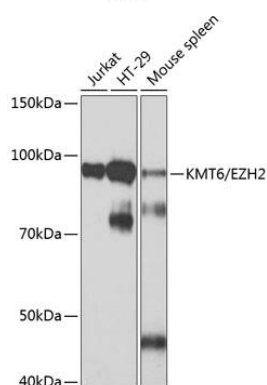
Store at -20°C. Avoid freeze / thaw cycles. Buffer: PBS with 0.02% sodium azide, 0.05% BSA, 50% glycerol, pH7.3.

## Product Images

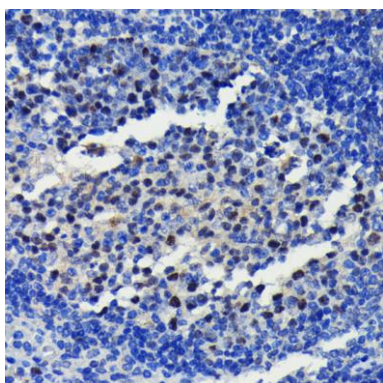
---



Western blot analysis of extracts from normal (control) and KMT6 / EZH2 knockout (KO) HeLa cells, using KMT6 / EZH2 antibody (CAB19577) at 1:1000 dilution. Secondary antibody: HRP Goat Anti-Rabbit IgG (H+L) (CABS014) at 1:10000 dilution. Lysates/proteins: 25ug per lane. Blocking buffer: 3% nonfat dry milk in TBST. Detection: ECL Basic Kit (CABM00020). Exposure time: 3min.



Western blot analysis of extracts of various cell lines, using KMT6 / EZH2 antibody (CAB19577) at 1:1000 dilution. Secondary antibody: HRP Goat Anti-Rabbit IgG (H+L) (CABS014) at 1:10000 dilution. Lysates/proteins: 25ug per lane. Blocking buffer: 3% nonfat dry milk in TBST. Detection: ECL Basic Kit (CABM00020). Exposure time: 3min.



Immunohistochemistry of paraffin-embedded mouse spleen using KMT6 / EZH2 antibody (CAB19577) at dilution of 1:100 (40x lens).