

[KO Validated] Histone H2B Rabbit Polyclonal Antibody

CAB1958



Product Information

Size:

20uL, 50uL, 100uL, 200uL

Observed MW:

15kDa

Calculated MW:

13kDa

Applications:

WB IHC

Reactivity:

Human, Mouse, Rat

Antibody Information

Recommended dilutions:

WB 1:500 - 1:2000 IHC 1:50 - 1:200

Source:

Rabbit

Isotype:

IgG

Purification:

Affinity purification

Protein Background

Histones are basic nuclear proteins that are responsible for the nucleosome structure of the chromosomal fiber in eukaryotes. Two molecules of each of the four core histones (H2A, H2B, H3, and H4) form an octamer, around which approximately 146 bp of DNA is wrapped in repeating units, called nucleosomes. The linker histone, H1, interacts with linker DNA between nucleosomes and functions in the compaction of chromatin into higher order structures. This gene encodes a replication-dependent histone that is a member of the histone H2B family, and generates two transcripts through the use of the conserved stem-loop termination motif, and the polyA addition motif. The protein has antibacterial and antifungal antimicrobial activity.

Immunogen information

Gene ID:

8349

Uniprot

Q16778

Synonyms:

GL105; H2B; H2B.1; H2BFQ; H2BGL105; H2BQ; Histone H2B; HIST2H2BE

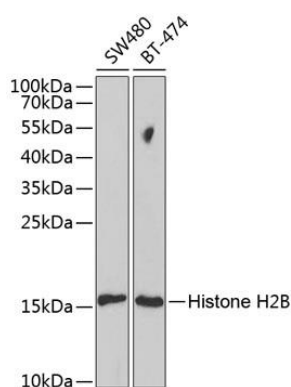
Immunogen:

Recombinant fusion protein containing a sequence corresponding to amino acids 1-126 of human HIST2H2BE (NP_003519.1).

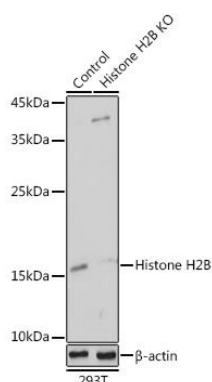
Storage:

Store at -20°C. Avoid freeze / thaw cycles. Buffer: PBS with 0.02% sodium azide, 50% glycerol, pH7.3.

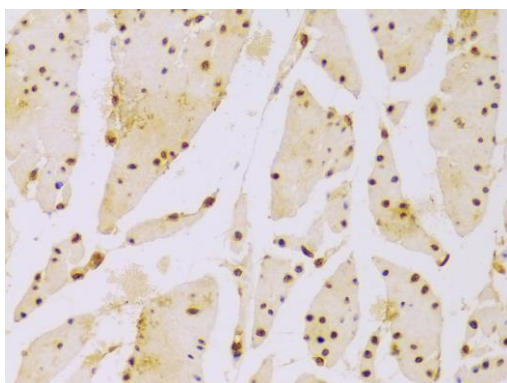
Product Images



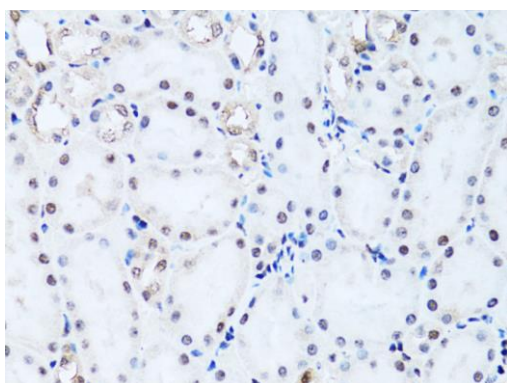
Western blot analysis of extracts of various cell lines, using Histone H2B antibody (CAB1958) at 1:1000 dilution. Secondary antibody: HRP Goat Anti-Rabbit IgG (H+L) (CABS014) at 1:10000 dilution. Lysates/proteins: 25ug per lane. Blocking buffer: 3% nonfat dry milk in TBST.



Western blot analysis of extracts from normal (control) and Histone H2B Rabbit pAb knockout (KO) 293T cells, using Histone H2B Rabbit pAb antibody (CAB1958) at 1:1000 dilution. Secondary antibody: HRP Goat Anti-Rabbit IgG (H+L) (CABS014) at 1:10000 dilution. Lysates/proteins: 25ug per lane. Blocking buffer: 3% nonfat dry milk in TBST. Detection: ECL Basic Kit (CABM00020). Exposure time: 2s.



Immunohistochemistry of paraffin-embedded human esophagus using Histone H2B antibody (CAB1958) at dilution of 1:100 (40x lens).



Immunohistochemistry of paraffin-embedded rat kidney using Histone H2B antibody (CAB1958) at dilution of 1:100 (40x lens).