

RIPK1 Rabbit Monoclonal Antibody



CAB19580

Product Information

Size:

20uL, 50uL, 100uL, 200uL

Observed MW:

75KDa

Calculated MW:

75kDa

Applications:

WB IP

Reactivity:

Human, Mouse

Antibody Information

Recommended dilutions:

WB 1:500 - 1:2000 IP 1:50 - 1:200

Source:

Rabbit

Isotype:

IgG

Purification:

Affinity purification

Protein Background

Immunogen information

Gene ID:

8737

Uniprot

Q13546

Synonyms:

RIP; RIP-1; RIP1; RIPK1

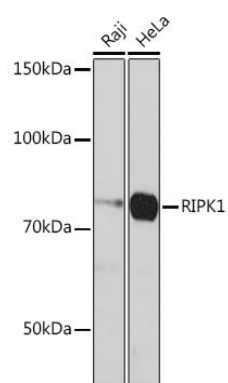
Immunogen:

A synthesized peptide derived from human RIPK1.

Storage:

Store at -20°C. Avoid freeze / thaw cycles. Buffer: PBS with 0.02% sodium azide, 0.05% BSA, 50% glycerol, pH7.3.

Product Images



Western blot - RIPK1 Rabbit mAb (CAB19580)