

ATG3 Rabbit Monoclonal Antibody



CAB19594

Product Information

Size:

20uL, 50uL, 100uL, 200uL

Observed MW:

40KDa

Calculated MW:

40kDa

Applications:

WB IHC

Reactivity:

Human, Mouse, Rat

Protein Background

This gene encodes a ubiquitin-like-conjugating enzyme and is a component of ubiquitination-like systems involved in autophagy, the process of degradation, turnover and recycling of cytoplasmic constituents in eukaryotic cells. This protein is known to play a role in regulation of autophagy during cell death. A pseudogene of this gene is located on chromosome 20. Alternative splicing results in multiple transcript variants encoding different isoforms. [provided by RefSeq, Jul 2013]

Immunogen information

Gene ID:

64422

Uniprot

Q9NT62

Synonyms:

ATG3; APG3; APG3-LIKE; APG3L; PC3-96

Antibody Information

Recommended dilutions:

WB 1:500 - 1:2000 IHC 1:50 - 1:200

Source:

Rabbit

Isotype:

IgG

Purification:

Affinity purification

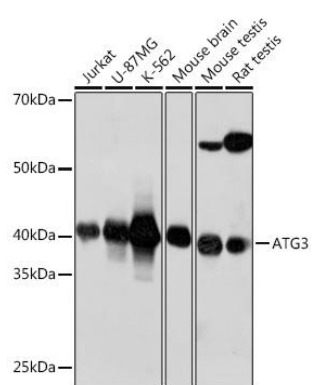
Immunogen:

A synthesized peptide derived from human Apg3 (Atg3).

Storage:

Store at -20°C. Avoid freeze / thaw cycles. Buffer: PBS with 0.02% sodium azide, 0.05% BSA, 50% glycerol, pH7.3.

Product Images



Western blot - ATG3 Rabbit mAb (CAB19594)