

[KO Validated] PARP Rabbit Monoclonal Antibody

CAB19596



Product Information

Size:

20uL, 50uL, 100uL, 200uL

Observed MW:

89KDa/113KDa

Calculated MW:

113, 89kDa

Applications:

WB IHC

Reactivity:

Human, Mouse, Rat

Antibody Information

Recommended dilutions:

WB 1:500 - 1:2000 IHC 1:50 - 1:200

Source:

Rabbit

Isotype:

IgG

Purification:

Affinity purification

Protein Background

This gene encodes a chromatin-associated enzyme, poly(ADP-ribose)transferase, which modifies various nuclear proteins by poly(ADP-ribose)ation. The modification is dependent on DNA and is involved in the regulation of various important cellular processes such as differentiation, proliferation, and tumor transformation and also in the regulation of the molecular events involved in the recovery of cell from DNA damage. In addition, this enzyme may be the site of mutation in Fanconi anemia, and may participate in the pathophysiology of type I diabetes. [provided by RefSeq, Jul 2008]

Immunogen information

Gene ID:

142

Uniprot

P09874

Synonyms:

ADPRT; ADPRT 1; ADPRT1; ARTD1; PARP; PARP-1; PPOL; pADPRT-1; PARP1; Cleaved PARP; PARP1

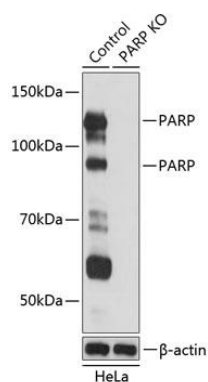
Immunogen:

A synthesized peptide derived from human PARP.

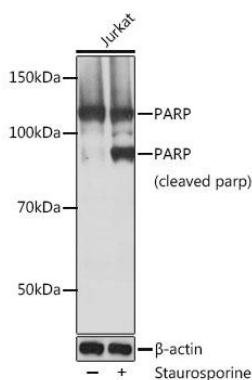
Storage:

Store at -20°C. Avoid freeze / thaw cycles. Buffer: PBS with 0.02% sodium azide, 0.05% BSA, 50% glycerol, pH7.3.

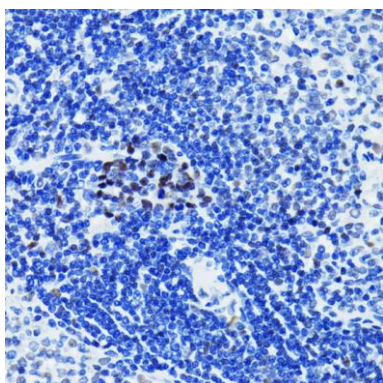
Product Images



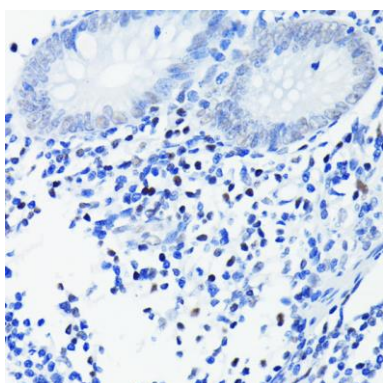
Western blot analysis of extracts from normal (control) and PARP knockout (KO) HeLa cells, using PARP antibody (CAB19596) at 1:1000 dilution. Secondary antibody: HRP Goat Anti-Rabbit IgG (H+L) (CABS014) at 1:10000 dilution. Lysates/proteins: 25ug per lane. Blocking buffer: 3% nonfat dry milk in TBST. Detection: ECL Basic Kit (CABM00020). Exposure time: 1s.



Western blot analysis of extracts of Jurkat cells, using PARP antibody (CAB19596) at 1:1000 dilution. Jurkat cells were treated by Staurosporine (1uM) at room temperature for 3 hours. Secondary antibody: HRP Goat Anti-Rabbit IgG (H+L) (CABS014) at 1:10000 dilution. Lysates/proteins: 25ug per lane. Blocking buffer: 3% nonfat dry milk in TBST. Detection: ECL Basic Kit (CABM00020). Exposure time: 1s.



Immunohistochemistry of paraffin-embedded rat spleen using PARP antibody (CAB19596) at dilution of 1:100 (40x lens).



Immunohistochemistry of paraffin-embedded human appendix using PARP antibody (CAB19596) at dilution of 1:100 (40x lens).