

Drosha Rabbit Monoclonal Antibody



CAB19598

Product Information

Size:

20uL, 50uL, 100uL, 200uL

Observed MW:

159KDa

Calculated MW:

159kDa

Applications:

WB IF

Reactivity:

Human

Antibody Information

Recommended dilutions:

WB 1:500 - 1:2000 IF 1:50 - 1:200

Source:

Rabbit

Isotype:

IgG

Purification:

Affinity purification

Protein Background

This gene encodes a ribonuclease (RNase) III double-stranded RNA-specific ribonuclease and subunit of the microprocessor protein complex, which catalyzes the initial processing step of microRNA (miRNA) synthesis. The encoded protein cleaves the stem loop structure from the primary microRNA (pri-miRNA) in the nucleus, yielding the precursor miRNA (pre-miRNA), which is then exported to the cytoplasm for further processing. In a human cell line lacking a functional copy of this gene, canonical miRNA synthesis is reduced. Somatic mutations in this gene have been observed in human patients with kidney cancer. [provided by RefSeq, Sep 2016]

Immunogen information

Gene ID:

29102

Uniprot

Q9NRR4

Synonyms:

DROSHA; ETOHI2; HSA242976; RANSE3L; RN3; RNASE3L; RNASEN

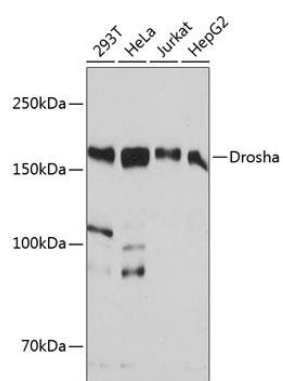
Immunogen:

A synthesized peptide derived from human Drosha.

Storage:

Store at -20°C. Avoid freeze / thaw cycles. Buffer: PBS with 0.02% sodium azide, 0.05% BSA, 50% glycerol, pH7.3.

Product Images



Western blot - Drosha Rabbit mAb (CAB19598)