

# ETS1 Rabbit Monoclonal Antibody



**CAB19603**

---

## Product Information

### Size:

20uL, 50uL, 100uL, 200uL

### Observed MW:

46kDa

### Calculated MW:

46kDa

### Applications:

WB

### Reactivity:

Human, Rat

## Protein Background

This gene encodes a member of the ETS family of transcription factors, which are defined by the presence of a conserved ETS DNA-binding domain that recognizes the core consensus DNA sequence GGAA/T in target genes. These proteins function either as transcriptional activators or repressors of numerous genes, and are involved in stem cell development, cell senescence and death, and tumorigenesis. Alternatively spliced transcript variants encoding different isoforms have been described for this gene.[provided by RefSeq, Jul 2011]

## Immunogen information

### Gene ID:

2113

### Uniprot

P14921

### Synonyms:

ETS-1; EWSR2; c-ets-1; p54; ETS1

## Antibody Information

### Recommended dilutions:

WB 1:500 - 1:2000

### Source:

Rabbit

### Isotype:

IgG

### Purification:

Affinity purification

### Immunogen:

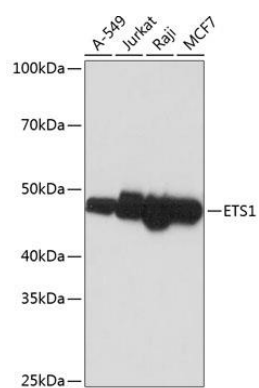
A synthesized peptide derived from human ETS1.

### Storage:

Store at -20°C. Avoid freeze / thaw cycles. Buffer: PBS with 0.02% sodium azide, 0.05% BSA, 50% glycerol, pH7.3.

## Product Images

---



Western blot - ETS1 Rabbit mAb (CAB19603)