

# IKKBeta Rabbit Monoclonal Antibody



CAB19606

## Product Information

### Size:

20uL, 50uL, 100uL, 200uL

### Observed MW:

87KDa

### Calculated MW:

87kDa

### Applications:

WB IHC

### Reactivity:

Human

## Protein Background

The protein encoded by this gene phosphorylates the inhibitor in the inhibitor/NF-kappa-B complex, causing dissociation of the inhibitor and activation of NF-kappa-B. The encoded protein itself is found in a complex of proteins. Several transcript variants, some protein-coding and some not, have been found for this gene. [provided by RefSeq, Sep 2011]

## Immunogen information

### Gene ID:

3551

### Uniprot

O14920

### Synonyms:

IKKBK; IKK-beta; IKK2; IKKB; IMD15; NFKBIKB; IKK beta

## Antibody Information

### Recommended dilutions:

WB 1:500 - 1:2000 IHC 1:50  
- 1:200

### Source:

Rabbit

### Isotype:

IgG

### Purification:

Affinity purification

### Immunogen:

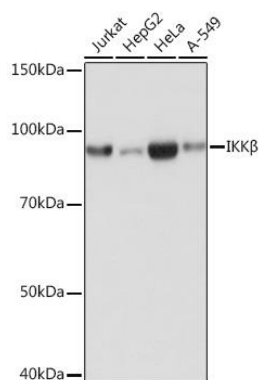
A synthesized peptide derived from human IKKBeta.

### Storage:

Store at -20°C. Avoid freeze / thaw cycles. Buffer: PBS with 0.02% sodium azide, 0.05% BSA, 50% glycerol, pH7.3.

## Product Images

---



Western blot - IKKβ Rabbit mAb (CAB19606)