

# LAMP2 Rabbit Polyclonal Antibody



CAB1961

## Product Information

### Size:

20uL, 50uL, 100uL, 200uL

### Observed MW:

118kDa

### Calculated MW:

44kDa/45kDa

### Applications:

WB IHC

### Reactivity:

Human

## Protein Background

The protein encoded by this gene is a member of a family of membrane glycoproteins. This glycoprotein provides selectins with carbohydrate ligands. It may play a role in tumor cell metastasis. It may also function in the protection, maintenance, and adhesion of the lysosome. Alternative splicing of this gene results in multiple transcript variants encoding distinct proteins.

## Immunogen information

### Gene ID:

3920

### Uniprot

P13473

### Synonyms:

LAMP2; CD107b; LAMP-2; LAMPB; LGP-96; LGP110

## Antibody Information

### Recommended dilutions:

WB 1:500 - 1:2000 IHC 1:50  
- 1:200

### Source:

Rabbit

### Isotype:

IgG

### Purification:

Affinity purification

### Immunogen:

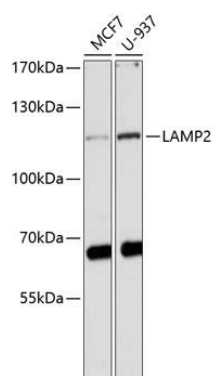
Recombinant fusion protein containing a sequence corresponding to amino acids 30-300 of human LAMP2 (NP\_054701.1).

### Storage:

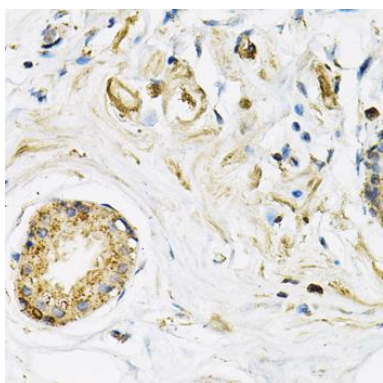
Store at -20°C. Avoid freeze / thaw cycles. Buffer: PBS with 0.02% sodium azide, 50% glycerol, pH7.3.

## Product Images

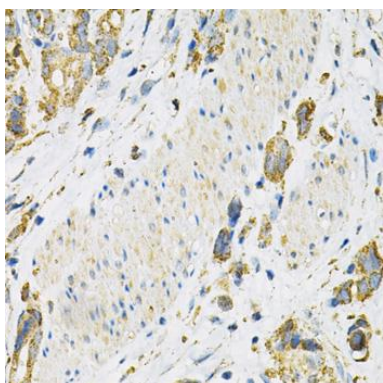
---



Western blot analysis of extracts of various cell lines, using LAMP2 antibody (CAB1961) at 1:1000 dilution. Secondary antibody: HRP Goat Anti-Rabbit IgG (H+L) (CABS014) at 1:10000 dilution. Lysates/proteins: 25ug per lane. Blocking buffer: 3% nonfat dry milk in TBST. Detection: ECL Basic Kit (CABM00020). Exposure time: 30s.



Immunohistochemistry of paraffin-embedded human breast cancer using LAMP2 Antibody (CAB1961) at dilution of 1:100 (40x lens).



Immunohistochemistry of paraffin-embedded human gastric cancer using LAMP2 Antibody (CAB1961) at dilution of 1:100 (40x lens).