

# [KO Validated] Cleaved PARP p25 Rabbit Monoclonal Antibody

## CAB19612



### Product Information

**Size:**

20uL, 50uL, 100uL, 200uL

**Observed MW:**

27kDa

**Calculated MW:**

25kDa

**Applications:**

WB

**Reactivity:**

Human, Mouse

### Antibody Information

**Recommended dilutions:**

WB 1:500 - 1:2000

**Source:**

Rabbit

**Isotype:**

IgG

**Purification:**

Affinity purification

### Protein Background

This gene encodes a chromatin-associated enzyme, poly(ADP-ribosyl)transferase, which modifies various nuclear proteins by poly(ADP-ribosyl)ation. The modification is dependent on DNA and is involved in the regulation of various important cellular processes such as differentiation, proliferation, and tumor transformation and also in the regulation of the molecular events involved in the recovery of cell from DNA damage. In addition, this enzyme may be the site of mutation in Fanconi anemia, and may participate in the pathophysiology of type I diabetes. [provided by RefSeq, Jul 2008]

### Immunogen information

**Gene ID:**

142

**Uniprot**

P09874

**Synonyms:**

ADPRT; ADPRT 1; ADPRT1; ARTD1; PARP; PARP-1; PPOL; pADPRT-1; PARP1; Cleaved PARP; PARP1

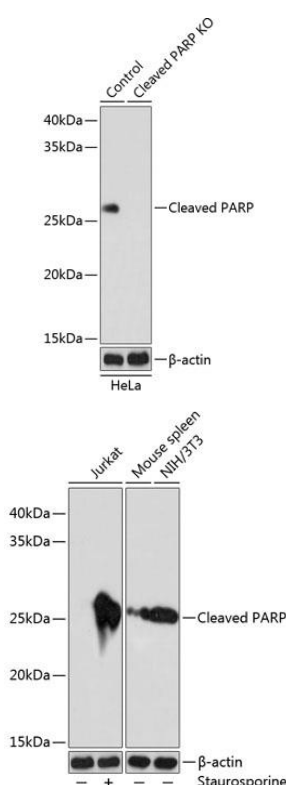
**Immunogen:**

A synthesized peptide derived from human Cleaved PARP.

**Storage:**

Store at -20°C. Avoid freeze / thaw cycles. Buffer: PBS with 0.02% sodium azide, 0.05% BSA, 50% glycerol, pH7.3.

## Product Images



Western blot analysis of extracts from normal (control) and Cleaved PARP knockout (KO) HeLa cells, using Cleaved PARP antibody (CAB19612) at 1:1000 dilution. Secondary antibody: HRP Goat Anti-Rabbit IgG (H+L) (CABS014) at 1:10000 dilution. Lysates/proteins: 25ug per lane. Blocking buffer: 3% nonfat dry milk in TBST. Detection: ECL Basic Kit (CABM00020). Exposure time: 90s.

Western blot analysis of extracts of various cell lines, using Cleaved PARP antibody (CAB19612) at 1:1000 dilution. Jurkat cells were treated by Staurosporine (1uM) at room temperature for 3 hours. Secondary antibody: HRP Goat Anti-Rabbit IgG (H+L) (CABS014) at 1:10000 dilution. Lysates/proteins: 25ug per lane. Blocking buffer: 3% nonfat dry milk in TBST. Detection: ECL Basic Kit (CABM00020). Exposure time: 90s.