

**[KO Validated] HuR / ELAVL1 Rabbit Monoclonal Antibody**  
**CAB19622**



---

**Product Information**

**Size:**

20uL, 50uL, 100uL, 200uL

**Observed MW:**

36kDa

**Calculated MW:**

36kDa

**Applications:**

WB IHC IF IP

**Reactivity:**

Human, Mouse, Rat

**Antibody Information**

**Recommended dilutions:**

WB 1:500 - 1:2000 IHC 1:50  
- 1:200 IF 1:50 - 1:200 IP  
1:50 - 1:200

**Source:**

Rabbit

**Isotype:**

IgG

**Purification:**

Affinity purification

**Protein Background**

The protein encoded by this gene is a member of the ELAVL family of RNA-binding proteins that contain several RNA recognition motifs, and selectively bind AU-rich elements (AREs) found in the 3' untranslated regions of mRNAs. AREs signal degradation of mRNAs as a means to regulate gene expression, thus by binding AREs, the ELAVL family of proteins play a role in stabilizing ARE-containing mRNAs. This gene has been implicated in a variety of biological processes and has been linked to a number of diseases, including cancer. It is highly expressed in many cancers, and could be potentially useful in cancer diagnosis, prognosis, and therapy. [provided by RefSeq, Sep 2012]

**Immunogen information**

**Gene ID:**

1994

**Uniprot**

Q15717

**Synonyms:**

ELAV1; HUR; Hua; MeIG; HuR / ELAVL1; ELAVL1

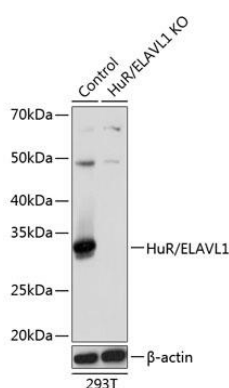
**Immunogen:**

A synthesized peptide derived from human HuR / ELAVL1.

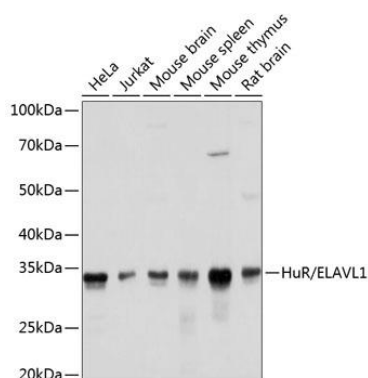
**Storage:**

Store at -20°C. Avoid freeze / thaw cycles. Buffer: PBS with 0.02% sodium azide, 0.05% BSA, 50% glycerol, pH7.3.

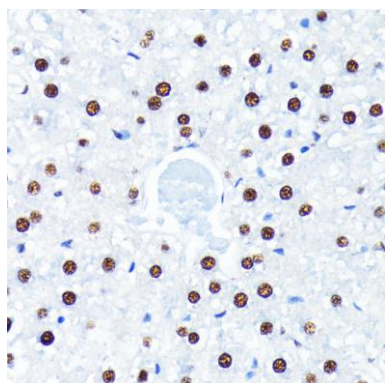
## Product Images



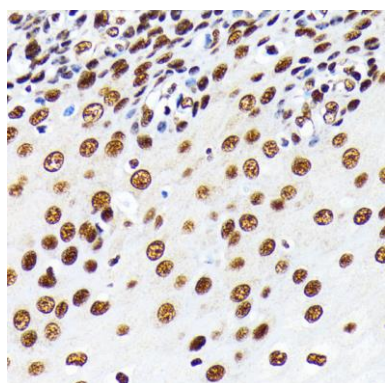
Western blot analysis of extracts from normal (control) and HuR / ELAVL1 knockout (KO) 293T cells, using HuR / ELAVL1 antibody (CAB19622) at 1:1000 dilution. Secondary antibody: HRP Goat Anti-Rabbit IgG (H+L) (CABS014) at 1:10000 dilution. Lysates/proteins: 25ug per lane. Blocking buffer: 3% nonfat dry milk in TBST. Detection: ECL Basic Kit (CABM00020). Exposure time: 1s.



Western blot analysis of extracts of various cell lines, using HuR / ELAVL1 antibody (CAB19622) at 1:1000 dilution. Secondary antibody: HRP Goat Anti-Rabbit IgG (H+L) (CABS014) at 1:10000 dilution. Lysates/proteins: 25ug per lane. Blocking buffer: 3% nonfat dry milk in TBST. Detection: ECL Basic Kit (CABM00020). Exposure time: 1s.



Immunohistochemistry of paraffin-embedded rat liver using HuR / ELAVL1 antibody (CAB19622) at dilution of 1:100 (40x lens).



Immunohistochemistry of paraffin-embedded human esophageal using HuR / ELAVL1 antibody (CAB19622) at dilution of 1:100 (40x lens).