

GATA3 Rabbit Monoclonal Antibody



CAB19636

Product Information

Size:

20uL, 50uL, 100uL, 200uL

Observed MW:

48KDa

Calculated MW:

48kDa

Applications:

WB

Reactivity:

Human, Mouse

Protein Background

This gene encodes a protein which belongs to the GATA family of transcription factors. The protein contains two GATA-type zinc fingers and is an important regulator of T-cell development and plays an important role in endothelial cell biology. Defects in this gene are the cause of hypoparathyroidism with sensorineural deafness and renal dysplasia. [provided by RefSeq, Nov 2009]

Immunogen information

Gene ID:

2625

Uniprot

P23771

Synonyms:

GATA3; HDR; HDRS

Antibody Information

Recommended dilutions:

WB 1:500 - 1:2000

Source:

Rabbit

Isotype:

IgG

Purification:

Affinity purification

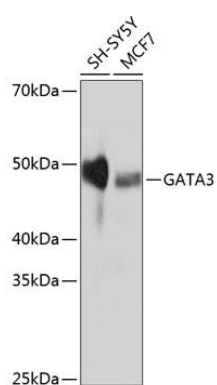
Immunogen:

A synthesized peptide derived from human GATA3.

Storage:

Store at -20°C. Avoid freeze / thaw cycles. Buffer: PBS with 0.02% sodium azide, 0.05% BSA, 50% glycerol, pH7.3.

Product Images



Western blot - GATA3 Rabbit mAb (CAB19636)