

# Glutamine Synthetase Rabbit Monoclonal Antibody

## CAB19641



### Product Information

**Size:**

20uL, 50uL, 100uL, 200uL

**Observed MW:**

42KDa

**Calculated MW:**

42kDa

**Applications:**

WB IHC

**Reactivity:**

Human, Mouse, Rat

### Antibody Information

**Recommended dilutions:**

WB 1:500 - 1:2000 IHC 1:50 - 1:200

**Source:**

Rabbit

**Isotype:**

IgG

**Purification:**

Affinity purification

### Protein Background

The protein encoded by this gene belongs to the glutamine synthetase family. It catalyzes the synthesis of glutamine from glutamate and ammonia in an ATP-dependent reaction. This protein plays a role in ammonia and glutamate detoxification, acid-base homeostasis, cell signaling, and cell proliferation. Glutamine is an abundant amino acid, and is important to the biosynthesis of several amino acids, pyrimidines, and purines. Mutations in this gene are associated with congenital glutamine deficiency, and overexpression of this gene was observed in some primary liver cancer samples. There are six pseudogenes of this gene found on chromosomes 2, 5, 9, 11, and 12. Alternative splicing results in multiple transcript variants. [provided by RefSeq, Dec 2014]

### Immunogen information

**Gene ID:**

2752

**Uniprot**

P15104

**Synonyms:**

GLNS; GS; PIG43; PIG59; GLUL

**Immunogen:**

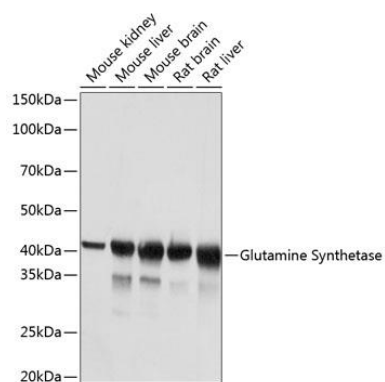
A synthesized peptide derived from human Glutamine Synthetase.

**Storage:**

Store at -20°C. Avoid freeze / thaw cycles. Buffer: PBS with 0.02% sodium azide, 0.05% BSA, 50% glycerol, pH7.3.

## Product Images

---



Western blot - Glutamine Synthetase Rabbit mAb (CAB19641)