

[KO Validated] NF- κ B p65 Rabbit Monoclonal Antibody

CAB19653



Product Information

Size:

20uL, 50uL, 100uL, 200uL

Observed MW:

65KDa

Calculated MW:

65kDa

Applications:

WB IHC IP

Reactivity:

Human, Mouse, Rat

Protein Background

NF- κ B is a ubiquitous transcription factor involved in several biological processes. It is held in the cytoplasm in an inactive state by specific inhibitors. Upon degradation of the inhibitor, NF- κ B moves to the nucleus and activates transcription of specific genes. NF- κ B is composed of NFKB1 or NFKB2 bound to either REL, RELA, or RELB. The most abundant form of NF- κ B is NFKB1 complexed with the product of this gene, RELA. Four transcript variants encoding different isoforms have been found for this gene. [provided by RefSeq, Sep 2011]

Immunogen information

Gene ID:

5970

Uniprot

Q04206

Synonyms:

NFKB3; p65; NF- κ B p65; RELA; CMCU

Antibody Information

Recommended dilutions:

WB 1:500 - 1:2000 IHC 1:50
- 1:200 IP 1:50 - 1:200

Source:

Rabbit

Isotype:

IgG

Purification:

Affinity purification

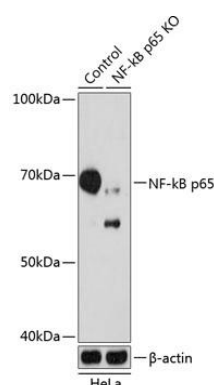
Immunogen:

A synthesized peptide derived from human NF- κ B p65.

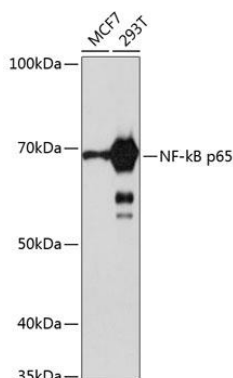
Storage:

Store at -20°C. Avoid freeze / thaw cycles. Buffer: PBS with 0.02% sodium azide, 0.05% BSA, 50% glycerol, pH7.3.

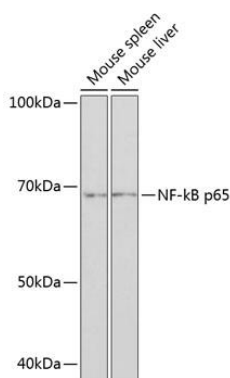
Product Images



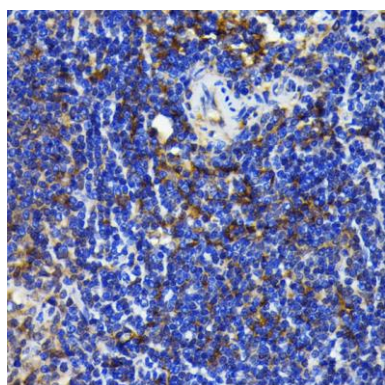
Western blot analysis of extracts from normal (control) and NF-kB p65 knockout (KO) HeLa cells, using NF-kB p65 antibody (CAB19653) at 1:1000 dilution. Secondary antibody: HRP Goat Anti-Rabbit IgG (H+L) (CABS014) at 1:10000 dilution. Lysates/proteins: 25ug per lane. Blocking buffer: 3% nonfat dry milk in TBST. Detection: ECL Basic Kit (CABM00020). Exposure time: 3min.



Western blot analysis of extracts of various cell lines, using NF-kB p65 antibody (CAB19653) at 1:1000 dilution. Secondary antibody: HRP Goat Anti-Rabbit IgG (H+L) (CABS014) at 1:10000 dilution. Lysates/proteins: 25ug per lane. Blocking buffer: 3% nonfat dry milk in TBST. Detection: ECL Basic Kit (CABM00020). Exposure time: 3min.



Western blot analysis of extracts of various cell lines, using NF-kB p65 antibody (CAB19653) at 1:1000 dilution. Secondary antibody: HRP Goat Anti-Rabbit IgG (H+L) (CABS014) at 1:10000 dilution. Lysates/proteins: 25ug per lane. Blocking buffer: 3% nonfat dry milk in TBST. Detection: ECL Enhanced Kit (CABM00021). Exposure time: 3min.



Immunohistochemistry of paraffin-embedded rat spleen using NF-kB p65 antibody (CAB19653) at dilution of 1:100 (40x lens).