

**[KO Validated] active + pro Caspase-3 Rabbit  
Monoclonal Antibody  
CAB19654**



---

**Product Information**

**Size:**

20uL, 50uL, 100uL, 200uL

**Observed MW:**

17kDa/32kDa/35kDa

**Calculated MW:**

17kDa/32kDa

**Applications:**

WB IF

**Reactivity:**

Human, Mouse, Rat

**Antibody Information**

**Recommended dilutions:**

WB 1:500 - 1:2000 IF 1:50 - 1:200

**Source:**

Rabbit

**Isotype:**

IgG

**Purification:**

Affinity purification

**Protein Background**

This gene encodes a protein which is a member of the cysteine-aspartic acid protease (caspase) family. Sequential activation of caspases plays a central role in the execution-phase of cell apoptosis. Caspases exist as inactive proenzymes which undergo proteolytic processing at conserved aspartic residues to produce two subunits, large and small, that dimerize to form the active enzyme. This protein cleaves and activates caspases 6, 7 and 9, and the protein itself is processed by caspases 8, 9 and 10. It is the predominant caspase involved in the cleavage of amyloid-beta 4A precursor protein, which is associated with neuronal death in Alzheimer's disease. Alternative splicing of this gene results in two transcript variants that encode the same protein. [provided by RefSeq, Jul 2008]

**Immunogen information**

**Gene ID:**

836

**Uniprot**

P42574

**Synonyms:**

CPP32; CPP32B; SCA-1; Active Caspase 3; CASP3; active Caspase-3; Caspase 3; Caspase-3 p12; caspase-3

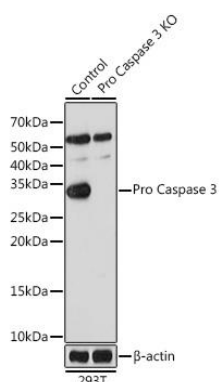
**Immunogen:**

A synthesized peptide derived from human active + pro Caspase-3.

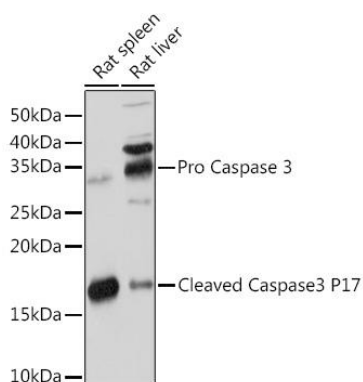
**Storage:**

Store at -20°C. Avoid freeze / thaw cycles. Buffer: PBS with 0.02% sodium azide, 0.05% BSA, 50% glycerol, pH7.3.

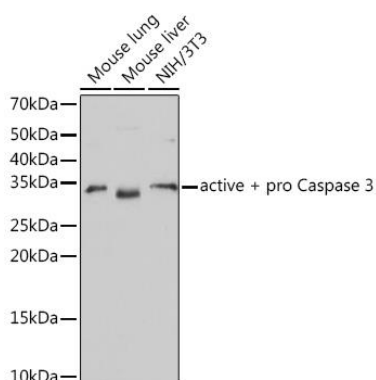
## Product Images



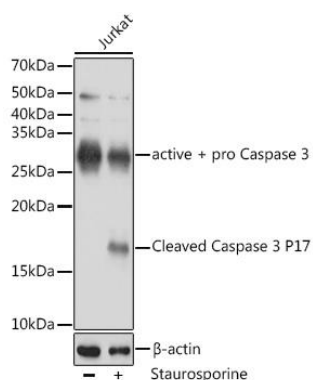
Western blot analysis of extracts from normal (control) and active + pro Caspase-3 knockout (KO) 293T cells, using active + pro Caspase-3 antibody (CAB19654) at 1:1000 dilution. Secondary antibody: HRP Goat Anti-Rabbit IgG (H+L) (CABS014) at 1:10000 dilution. Lysates/proteins: 25ug per lane. Blocking buffer: 3% nonfat dry milk in TBST. Detection: ECL Basic Kit (CABM00020). Exposure time: 90s.



Western blot analysis of extracts of various cell lines, using active + pro Caspase-3 antibody (CAB19654) at 1:1000 dilution. Secondary antibody: HRP Goat Anti-Rabbit IgG (H+L) (CABS014) at 1:10000 dilution. Lysates/proteins: 25ug per lane. Blocking buffer: 3% nonfat dry milk in TBST. Detection: ECL Basic Kit (CABM00020). Exposure time: 90s.



Western blot analysis of extracts of various cell lines, using active + pro Caspase-3 antibody (CAB19654) at 1:1000 dilution. Secondary antibody: HRP Goat Anti-Rabbit IgG (H+L) (CABS014) at 1:10000 dilution. Lysates/proteins: 25ug per lane. Blocking buffer: 3% nonfat dry milk in TBST. Detection: ECL Basic Kit (CABM00020). Exposure time: 3min.



Western blot analysis of extracts of Jurkat cells, using active + pro Caspase 3 antibody (CAB19654) at 1:1000 dilution. Jurkat cells were treated by Staurosporine(1uM) at room temperature for 3 hours. Secondary antibody: HRP Goat Anti-Rabbit IgG (H+L) (CABS014) at 1:10000 dilution. Lysates/proteins: 25ug per lane. Blocking buffer: 3% nonfat dry milk in TBST. Detection: ECL Basic Kit (CABM00020). Exposure time: 30s.