

# [KO Validated] Dnmt3a Rabbit Monoclonal Antibody

## CAB19659



### Product Information

**Size:**

20uL, 50uL, 100uL, 200uL

**Observed MW:**

80KDa/140KDa

**Calculated MW:**

130kDa

**Applications:**

WB

**Reactivity:**

Human, Mouse, Rat

### Protein Background

CpG methylation is an epigenetic modification that is important for embryonic development, imprinting, and X-chromosome inactivation. Studies in mice have demonstrated that DNA methylation is required for mammalian development. This gene encodes a DNA methyltransferase that is thought to function in de novo methylation, rather than maintenance methylation. The protein localizes to the cytoplasm and nucleus and its expression is developmentally regulated. [provided by RefSeq, Mar 2016]

### Immunogen information

**Gene ID:**

1788

**Uniprot**

Q9Y6K1

**Synonyms:**

DNMT3A; DNMT3A2; M.Hsa111A; TBRS; DNMT3A

### Antibody Information

**Recommended dilutions:**

WB 1:500 - 1:2000

**Source:**

Rabbit

**Isotype:**

IgG

**Purification:**

Affinity purification

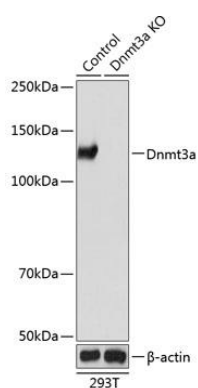
**Immunogen:**

A synthesized peptide derived from human Dnmt3a.

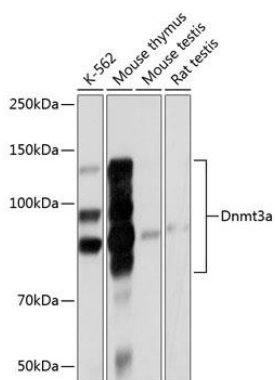
**Storage:**

Store at -20°C. Avoid freeze / thaw cycles. Buffer: PBS with 0.02% sodium azide, 0.05% BSA, 50% glycerol, pH7.3.

## Product Images



Western blot analysis of extracts from normal (control) and Dnmt3a knockout (KO) 293T cells, using Dnmt3a antibody (CAB19659) at 1:1000 dilution. Secondary antibody: HRP Goat Anti-Rabbit IgG (H+L) (CABS014) at 1:10000 dilution. Lysates/proteins: 25ug per lane. Blocking buffer: 3% nonfat dry milk in TBST. Detection: ECL Basic Kit (CABM00020). Exposure time: 1min.



Western blot analysis of extracts of various cell lines, using Dnmt3a antibody (CAB19659) at 1:1000 dilution. Secondary antibody: HRP Goat Anti-Rabbit IgG (H+L) (CABS014) at 1:10000 dilution. Lysates/proteins: 25ug per lane. Blocking buffer: 3% nonfat dry milk in TBST. Detection: ECL Basic Kit (CABM00020). Exposure time: 1min.