

CCL22 Rabbit Polyclonal Antibody



CAB1966

Product Information

Size:

20uL, 50uL, 100uL, 200uL

Observed MW:

Refer to figures

Calculated MW:

10kDa

Applications:

IHC

Reactivity:

Human, Rat

Protein Background

This antimicrobial gene is one of several Cys-Cys (CC) cytokine genes clustered on the q arm of chromosome 16. Cytokines are a family of secreted proteins involved in immunoregulatory and inflammatory processes. The CC cytokines are proteins characterized by two adjacent cysteines. The cytokine encoded by this gene displays chemotactic activity for monocytes, dendritic cells, natural killer cells and for chronically activated T lymphocytes. It also displays a mild activity for primary activated T lymphocytes and has no chemoattractant activity for neutrophils, eosinophils and resting T lymphocytes. The product of this gene binds to chemokine receptor CCR4. This chemokine may play a role in the trafficking of activated T lymphocytes to inflammatory sites and other aspects of activated T lymphocyte physiology.

Immunogen information

Gene ID:

6367

Uniprot

O00626

Antibody Information

Recommended dilutions:

IHC 1:50 - 1:100

Source:

Rabbit

Isotype:

IgG

Purification:

Affinity purification

Synonyms:

CCL22; A-152E5.1; ABCD-1; DC/B-CK; MDC; SCYA22; STCP-1

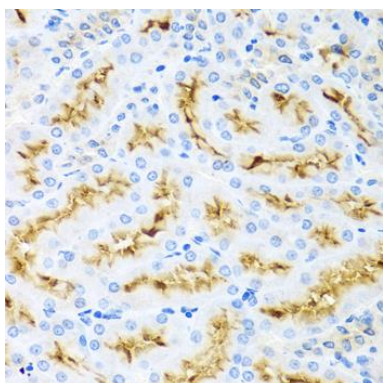
Immunogen:

Recombinant fusion protein containing a sequence corresponding to amino acids 1-93 of human CCL22 (NP_002981.2).

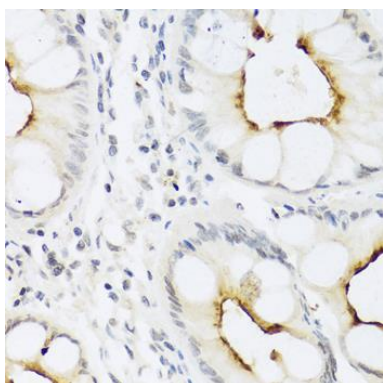
Storage:

Store at -20°C. Avoid freeze / thaw cycles. Buffer: PBS with 0.02% sodium azide, 50% glycerol, pH7.3.

Product Images



Immunohistochemistry of paraffin-embedded rat kidney using CCL22 antibody (CAB1966) at dilution of 1:100 (40x lens).



Immunohistochemistry of paraffin-embedded human colon using CCL22 antibody (CAB1966) at dilution of 1:100 (40x lens).