

[KO Validated] LC3B Rabbit Monoclonal Antibody



CAB19665

Product Information

Size:

20uL, 50uL, 100uL, 200uL

Observed MW:

14kDa, 16kDa

Calculated MW:

14kDa, 16kDa

Applications:

WB IHC IF

Reactivity:

Human, Mouse, Rat

Protein Background

The product of this gene is a subunit of neuronal microtubule-associated MAP1A and MAP1B proteins, which are involved in microtubule assembly and important for neurogenesis. Studies on the rat homolog implicate a role for this gene in autophagy, a process that involves the bulk degradation of cytoplasmic component.

Immunogen information

Gene ID:

81631

Uniprot

Q9GZQ8

Synonyms:

LC3B; ATG8F; MAP1LC3B-a; MAP1A/1BLC3; MAP1LC3B; LC3A/LC3B

Antibody Information

Recommended dilutions:

WB 1:500 - 1:2000 IHC 1:50
- 1:200 IF 1:50 - 1:200

Source:

Rabbit

Isotype:

IgG

Purification:

Affinity purification

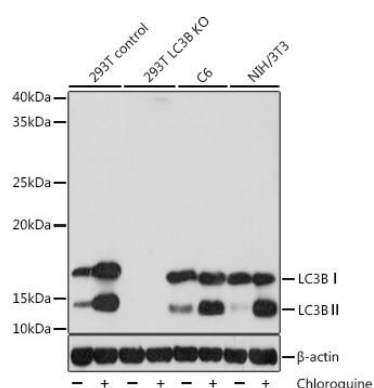
Immunogen:

A synthetic peptide of human LC3B.

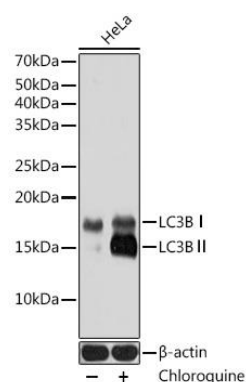
Storage:

Store at -20°C. Avoid freeze / thaw cycles. Buffer: PBS with 0.02% sodium azide, 0.05% BSA, 50% glycerol, pH7.3.

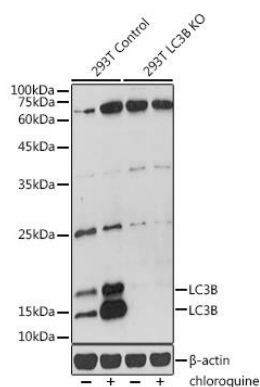
Product Images



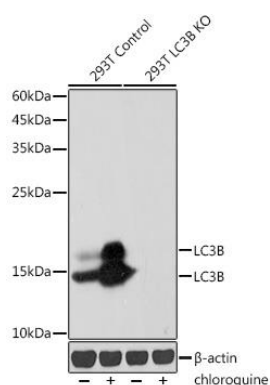
Western blot analysis of extracts of various cell lines, using LC3B antibody (CAB19665) at 1:1000 dilution. 293T cells, LC3B knockout (KO) 293T cells, C6 cells and NIH/3T3 cells were treated by Chloroquine (50 μ M) at 37°C for 20 hours. Secondary antibody: HRP Goat Anti-Rabbit IgG (H+L) (CABS014) at 1:10000 dilution. Lysates/proteins: 25ug per lane. Blocking buffer: 3% nonfat dry milk in TBST. Detection: ECL Basic Kit (CABM00020). Exposure time: 5s.



Western blot analysis of extracts of HeLa cells, using LC3B pAb (CAB19665) at 1:1000 dilution. HeLa cells were treated by Chloroquine (50 μ M) at 37°C for 20 hours. Secondary antibody: HRP Goat Anti-Rabbit IgG (H+L) (CABS014) at 1:10000 dilution. Lysates/proteins: 25ug per lane. Blocking buffer: 3% BSA. Detection: ECL Basic Kit (CABM00020). Exposure time: 5s.



Western blot analysis of extracts from normal (control) and LC3B knockout (KO) 293T cells, using LC3B antibody (CAB19665) at 1:1000 dilution. 293T cells were treated by Chloroquine (50 μ M) at 37°C for 20 hours. Secondary antibody: HRP Goat Anti-Rabbit IgG (H+L) (CABS014) at 1:10000 dilution. Lysates/proteins: 25ug per lane. Blocking buffer: 3% nonfat dry milk in TBST. Detection: ECL Enhanced Kit (CABM00021). Exposure time: 180s.



Western blot analysis of extracts from normal (control) and LC3B knockout (KO) 293T cells, using LC3B antibody (CAB19665) at 1:1000 dilution. 293T cells were treated by Chloroquine (50 μ M) at 37°C for 20 hours. Secondary antibody: HRP Goat Anti-Rabbit IgG (H+L) (CABS014) at 1:10000 dilution. Lysates/proteins: 25ug per lane. Blocking buffer: 3% nonfat dry milk in TBST. Detection: ECL Basic Kit (CABM00020). Exposure time: 30s.