

SMARCC2 Rabbit Polyclonal Antibody



CAB1967

Product Information

Size:

20uL, 50uL, 100uL, 200uL

Observed MW:

171kDa

Calculated MW:

124kDa/126kDa/132kDa

Applications:

WB IHC

Reactivity:

Human, Mouse, Rat

Protein Background

The protein encoded by this gene is a member of the SWI/SNF family of proteins, whose members display helicase and ATPase activities and which are thought to regulate transcription of certain genes by altering the chromatin structure around those genes. The encoded protein is part of the large ATP-dependent chromatin remodeling complex SNF/SWI and contains a predicted leucine zipper motif typical of many transcription factors. Alternatively spliced transcript variants encoding different isoforms have been found for this gene.

Immunogen information

Gene ID:

6601

Uniprot

Q8TAQ2

Synonyms:

SMARCC2; BAF170; CRACC2; Rsc8

Antibody Information

Recommended dilutions:

WB 1:200 - 1:2000 IHC 1:50 - 1:200

Source:

Rabbit

Isotype:

IgG

Purification:

Affinity purification

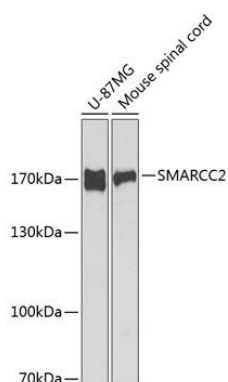
Immunogen:

A synthetic peptide corresponding to a sequence within amino acids 150-250 of human SMARCC2 (NP_620706.1).

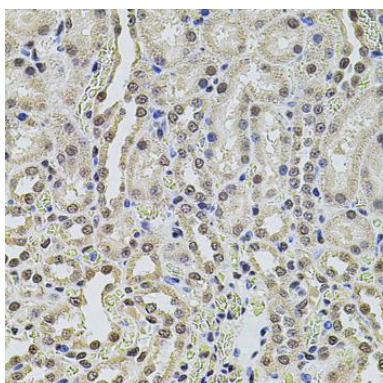
Storage:

Store at -20°C. Avoid freeze / thaw cycles. Buffer: PBS with 0.02% sodium azide, 50% glycerol, pH7.3.

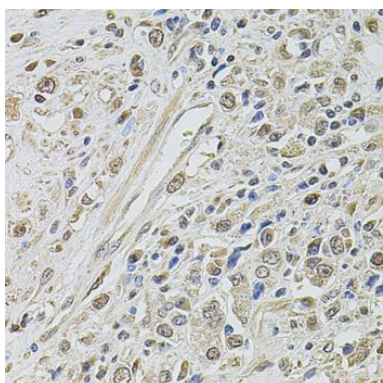
Product Images



Western blot analysis of extracts of various cell lines, using SMARCC2 antibody (CAB1967) at 1:1000 dilution. Secondary antibody: HRP Goat Anti-Rabbit IgG (H+L) (CABS014) at 1:10000 dilution. Lysates/proteins: 25ug per lane. Blocking buffer: 3% nonfat dry milk in TBST. Detection: ECL Enhanced Kit (CABM00021). Exposure time: 60s.



Immunohistochemistry of paraffin-embedded rat kidney using SMARCC2 antibody (CAB1967) at dilution of 1:100 (40x lens).



Immunohistochemistry of paraffin-embedded human prostate cancer using SMARCC2 antibody (CAB1967) at dilution of 1:100 (40x lens).