

# PGC1 alpha/beta Rabbit Monoclonal Antibody



CAB19674

## Product Information

### Size:

20uL, 50uL, 100uL, 200uL

### Observed MW:

113KDa

### Calculated MW:

113kDa

### Applications:

WB

### Reactivity:

Mouse, Rat

## Antibody Information

### Recommended dilutions:

WB 1:500 - 1:2000

### Source:

Rabbit

### Isotype:

IgG

### Purification:

Affinity purification

## Protein Background

The protein encoded by this gene is a transcriptional coactivator that regulates the genes involved in energy metabolism. This protein interacts with PPARgamma, which permits the interaction of this protein with multiple transcription factors. This protein can interact with, and regulate the activities of, cAMP response element binding protein (CREB) and nuclear respiratory factors (NRFs). It provides a direct link between external physiological stimuli and the regulation of mitochondrial biogenesis, and is a major factor that regulates muscle fiber type determination. This protein may be also involved in controlling blood pressure, regulating cellular cholesterol homeostasis, and the development of obesity.

## Immunogen information

### Gene ID:

10891/133522

### Uniprot

Q9UBK2/Q86YN6

### Synonyms:

LEM6; PGC-1(alpha); PGC-1alpha; PGC-1v; PGC1; PGC1A; PPARGC1; ERRL1; PERC; PGC-1(beta); PGC1B

### Immunogen:

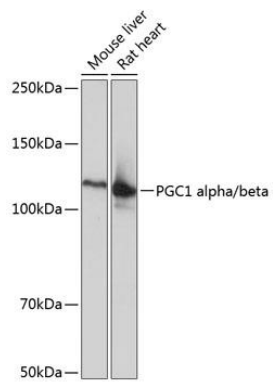
A synthesized peptide derived from human PGC1 alpha/beta.

### Storage:

Store at -20°C. Avoid freeze / thaw cycles. Buffer: PBS with 0.02% sodium azide, 0.05% BSA, 50% glycerol, pH7.3.

## Product Images

---



Western blot - PGC1 alpha/beta Rabbit mAb (CAB19674)