

Mitofusin 2 Rabbit Monoclonal Antibody



CAB19678

Product Information

Size:

20uL, 50uL, 100uL, 200uL

Observed MW:

80KDa

Calculated MW:

80kDa

Applications:

WB

Reactivity:

Human, Mouse, Rat

Antibody Information

Recommended dilutions:

WB 1:500 - 1:2000

Source:

Rabbit

Isotype:

IgG

Purification:

Affinity purification

Protein Background

This gene encodes a mitochondrial membrane protein that participates in mitochondrial fusion and contributes to the maintenance and operation of the mitochondrial network. This protein is involved in the regulation of vascular smooth muscle cell proliferation, and it may play a role in the pathophysiology of obesity. Mutations in this gene cause Charcot-Marie-Tooth disease type 2A2, and hereditary motor and sensory neuropathy VI, which are both disorders of the peripheral nervous system. Defects in this gene have also been associated with early-onset stroke. Two transcript variants encoding the same protein have been identified. [provided by RefSeq, Jul 2008]

Immunogen information

Gene ID:

9927

Uniprot

O95140

Synonyms:

CMT2A; CMT2A2; CMT2A2A; CMT2A2B; CPRP1; HMSN6A; HSG; MARF; MFN2; Mitofusin 2

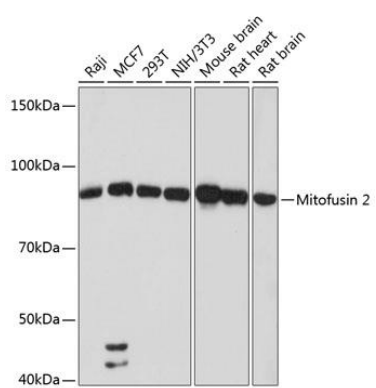
Immunogen:

A synthesized peptide derived from human Mitofusin 2.

Storage:

Store at -20°C. Avoid freeze / thaw cycles. Buffer: PBS with 0.02% sodium azide, 0.05% BSA, 50% glycerol, pH7.3.

Product Images



Western blot - Mitofusin 2 Rabbit mAb (CAB19678)