

TAPBP Rabbit Polyclonal Antibody



CAB1968

Product Information

Size:

20uL, 50uL, 100uL, 200uL

Observed MW:

48kDa

Calculated MW:

38kDa/43kDa/47kDa/53kDa

Applications:

WB IHC IF

Reactivity:

Human, Mouse, Rat

Antibody Information

Recommended dilutions:

WB 1:500 - 1:2000 IHC 1:50
- 1:100 IF 1:50 - 1:100

Source:

Rabbit

Isotype:

IgG

Purification:

Affinity purification

Protein Background

This gene encodes a transmembrane glycoprotein which mediates interaction between newly assembled major histocompatibility complex (MHC) class I molecules and the transporter associated with antigen processing (TAP), which is required for the transport of antigenic peptides across the endoplasmic reticulum membrane. This interaction is essential for optimal peptide loading on the MHC class I molecule. Up to four complexes of MHC class I and this protein may be bound to a single TAP molecule. This protein contains a C-terminal double-lysine motif (KKKAE) known to maintain membrane proteins in the endoplasmic reticulum. This gene lies within the major histocompatibility complex on chromosome 6. Alternative splicing results in three transcript variants encoding different isoforms.

Immunogen information

Gene ID:

6892

Uniprot

O15533

Synonyms:

TAPBP; NGS17; TAPA; TPN; TPSN; tapasin

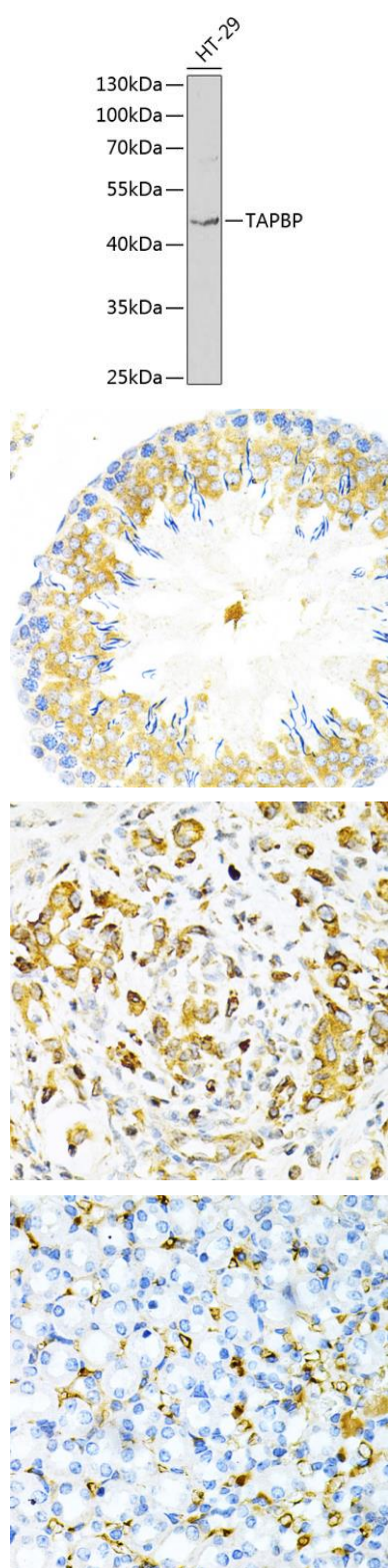
Immunogen:

Recombinant fusion protein containing a sequence corresponding to amino acids 30-260 of human TAPBP (NP_757345.2).

Storage:

Store at -20°C. Avoid freeze / thaw cycles. Buffer: PBS with 0.02% sodium azide, 50% glycerol, pH7.3.

Product Images



Western blot analysis of extracts of HT-29 cells, using TAPBP antibody (CAB1968) at 1:1000 dilution. Secondary antibody: HRP Goat Anti-Rabbit IgG (H+L) (CABS014) at 1:10000 dilution. Lysates/proteins: 25ug per lane. Blocking buffer: 3% nonfat dry milk in TBST. Detection: ECL Basic Kit (CABM00020). Exposure time: 90s.

Immunohistochemistry of paraffin-embedded rat testis using TAPBP Antibody (CAB1968) at dilution of 1:200 (40x lens).

Immunohistochemistry of paraffin-embedded human gastric cancer using TAPBP Antibody (CAB1968) at dilution of 1:200 (40x lens).

Immunohistochemistry of paraffin-embedded mouse kidney using TAPBP Antibody (CAB1968) at dilution of 1:200 (40x lens).