

Cathepsin D Rabbit Monoclonal Antibody



CAB19680

Product Information

Size:

20uL, 50uL, 100uL, 200uL

Observed MW:

28kDa/44kDa

Calculated MW:

46kDa/28kDa

Applications:

WB IHC

Reactivity:

Human, Mouse, Rat

Antibody Information

Recommended dilutions:

WB 1:500 - 1:2000 IHC 1:50
- 1:200

Source:

Rabbit

Isotype:

IgG

Purification:

Affinity purification

Protein Background

This gene encodes a member of the A1 family of peptidases. The encoded preproprotein is proteolytically processed to generate multiple protein products. These products include the cathepsin D light and heavy chains, which heterodimerize to form the mature enzyme. This enzyme exhibits pepsin-like activity and plays a role in protein turnover and in the proteolytic activation of hormones and growth factors. Mutations in this gene play a causal role in neuronal ceroid lipofuscinosis-10 and may be involved in the pathogenesis of several other diseases, including breast cancer and possibly Alzheimer's disease. [provided by RefSeq, Nov 2015]

Immunogen information

Gene ID:

1509

Uniprot

P07339

Synonyms:

CLN10; CPSD; HEL-S-130P; Cathepsin D; CTSD

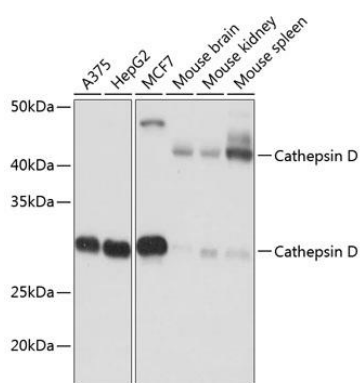
Immunogen:

A synthesized peptide derived from human Cathepsin D.

Storage:

Store at -20°C. Avoid freeze / thaw cycles. Buffer: PBS with 0.02% sodium azide, 0.05% BSA, 50% glycerol, pH7.3.

Product Images



Western blot - Cathepsin D Rabbit mAb (CAB19680)