

clAP1 Rabbit Monoclonal Antibody



CAB19688

Product Information

Size:

20uL, 50uL, 100uL, 200uL

Observed MW:

68KDa

Calculated MW:

70kDa

Applications:

WB IHC

Reactivity:

Human, Mouse, Rat

Protein Background

The protein encoded by this gene is a member of a family of proteins that inhibits apoptosis by binding to tumor necrosis factor receptor-associated factors TRAF1 and TRAF2, probably by interfering with activation of ICE-like proteases. This encoded protein inhibits apoptosis induced by serum deprivation and menadione, a potent inducer of free radicals. Alternatively spliced transcript variants encoding different isoforms have been found for this gene. [provided by RefSeq, Jan 2012]

Immunogen information

Gene ID:

329

Uniprot

Q13490

Synonyms:

API1; HIAP2; Hiap-2; MIHB; RNF48; c-IAP1; clAP1; BIRC2

Antibody Information

Recommended dilutions:

WB 1:500 - 1:2000 IHC 1:50 - 1:200

Source:

Rabbit

Isotype:

IgG

Purification:

Affinity purification

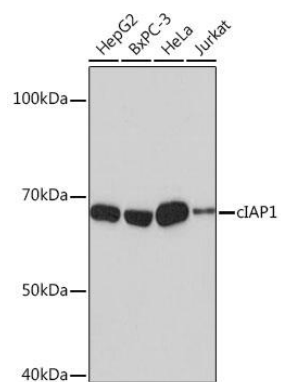
Immunogen:

A synthesized peptide derived from human clAP1.

Storage:

Store at -20°C. Avoid freeze / thaw cycles. Buffer: PBS with 0.02% sodium azide, 0.05% BSA, 50% glycerol, pH7.3.

Product Images



Western blot - cIAP1 Rabbit mAb (CAB19688)