

# NOX2/CYBB/gp91phox Rabbit Monoclonal Antibody

## CAB19701



### Product Information

**Size:**

20uL, 50uL, 100uL, 200uL

**Observed MW:**

65kDa

**Calculated MW:**

65kDa

**Applications:**

WB

**Reactivity:**

Human, Mouse, Rat

### Antibody Information

**Recommended dilutions:**

WB 1:500 - 1:2000

**Source:**

Rabbit

**Isotype:**

IgG

**Purification:**

Affinity purification

### Protein Background

Cytochrome b (-245) is composed of cytochrome b alpha (CYBA) and beta (CYBB) chain. It has been proposed as a primary component of the microbicidal oxidase system of phagocytes. CYBB deficiency is one of five described biochemical defects associated with chronic granulomatous disease (CGD). In this disorder, there is decreased activity of phagocyte NADPH oxidase; neutrophils are able to phagocytize bacteria but cannot kill them in the phagocytic vacuoles. The cause of the killing defect is an inability to increase the cell's respiration and consequent failure to deliver activated oxygen into the phagocytic vacuole. [provided by RefSeq, Jul 2008]

### Immunogen information

**Gene ID:**

1536

**Uniprot**

P04839

**Synonyms:**

AMCBX2; CGD; GP91-1; GP91-PHOX; GP91PHOX; IMD34; NOX2; p91-PHOX; CYBB

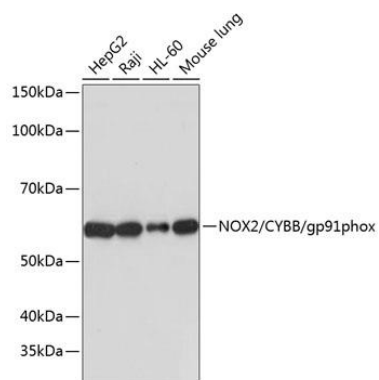
**Immunogen:**

A synthesized peptide derived from human NOX2/CYBB/gp91phox.

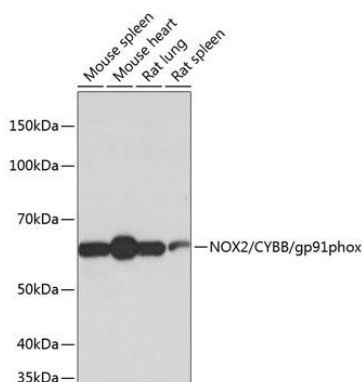
**Storage:**

Store at -20°C. Avoid freeze / thaw cycles. Buffer: PBS with 0.02% sodium azide, 0.05% BSA, 50% glycerol, pH7.3.

## Product Images



Western blot analysis of extracts of various cell lines, using NOX2/CYBB/gp91phox antibody (CAB19701) at 1:1000 dilution. Secondary antibody: HRP Goat Anti-Rabbit IgG (H+L) (CABS014) at 1:10000 dilution. Lysates/proteins: 25ug per lane. Blocking buffer: 3% nonfat dry milk in TBST. Detection: ECL Basic Kit (CABM00020). Exposure time: 1min.



Western blot analysis of extracts of various cell lines, using NOX2/CYBB/gp91phox antibody (CAB19701) at 1:1000 dilution. Secondary antibody: HRP Goat Anti-Rabbit IgG (H+L) (CABS014) at 1:10000 dilution. Lysates/proteins: 25ug per lane. Blocking buffer: 3% nonfat dry milk in TBST. Detection: ECL Basic Kit (CABM00020). Exposure time: 3min.