

PLCB1 Rabbit Polyclonal Antibody



CAB1971

Product Information

Size:

20uL, 50uL, 100uL, 200uL

Observed MW:

139kDa

Calculated MW:

133kDa/138kDa

Applications:

WB IHC IF

Reactivity:

Human, Mouse, Rat

Antibody Information

Recommended dilutions:

WB 1:500 - 1:2000 IHC 1:50
- 1:200 IF 1:50 - 1:200

Source:

Rabbit

Isotype:

IgG

Purification:

Affinity purification

Protein Background

The protein encoded by this gene catalyzes the formation of inositol 1, 4, 5-trisphosphate and diacylglycerol from phosphatidylinositol 4, 5-bisphosphate. This reaction uses calcium as a cofactor and plays an important role in the intracellular transduction of many extracellular signals. This gene is activated by two G-protein alpha subunits, alpha-q and alpha-11. Two transcript variants encoding different isoforms have been found for this gene.

Immunogen information

Gene ID:

23236

Uniprot

Q9NQ66

Synonyms:

PLCB1; EIEE12; PI-PLC; PLC-154; PLC-I; PLC-beta-1; PLC154;
PLCB1A; PLCB1B

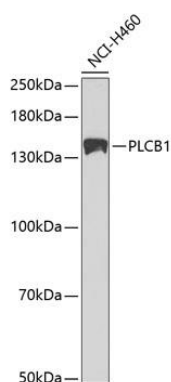
Immunogen:

Recombinant fusion protein containing a sequence corresponding to amino acids 917-1216 of human PLCB1 (NP_056007.1).

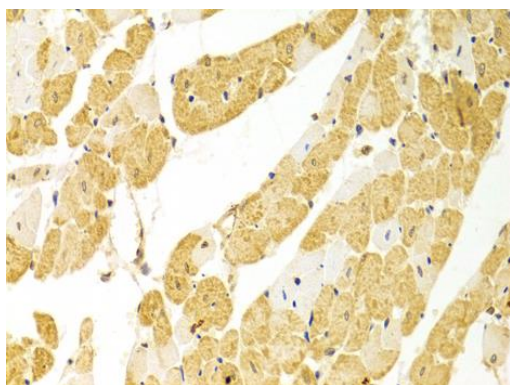
Storage:

Store at -20°C. Avoid freeze / thaw cycles. Buffer: PBS with 0.02% sodium azide, 50% glycerol, pH7.3.

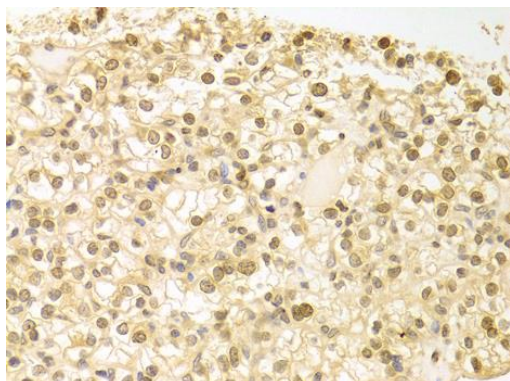
Product Images



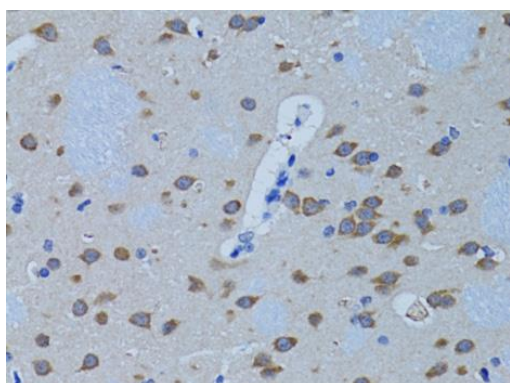
Western blot analysis of extracts of NCI-H460 cells, using PLCB1 antibody (CAB1971) at 1:1000 dilution. Secondary antibody: HRP Goat Anti-Rabbit IgG (H+L) (CABS014) at 1:10000 dilution. Lysates/proteins: 25ug per lane. Blocking buffer: 3% nonfat dry milk in TBST.



Immunohistochemistry of paraffin-embedded rat heart using PLCB1 antibody (CAB1971) at dilution of 1:100 (40x lens).



Immunohistochemistry of paraffin-embedded human kidney cancer using PLCB1 antibody (CAB1971) at dilution of 1:100 (40x lens).



Immunohistochemistry of paraffin-embedded rat brain using PLCB1 antibody (CAB1971) at dilution of 1:100 (40x lens).