

CSH1 Rabbit Polyclonal Antibody



CAB1972

Product Information

Size:

20uL, 50uL, 100uL, 200uL

Observed MW:

Calculated MW:

25kDa

Applications:

IHC

Reactivity:

Human

Antibody Information

Recommended dilutions:

IHC 1:50 - 1:100

Source:

Rabbit

Isotype:

IgG

Purification:

Affinity purification

Protein Background

The protein encoded by this gene is a member of the somatotropin/prolactin family of hormones and plays an important role in growth control. The gene is located at the growth hormone locus on chromosome 17 along with four other related genes in the same transcriptional orientation; an arrangement which is thought to have evolved by a series of gene duplications. Although the five genes share a remarkably high degree of sequence identity, they are expressed selectively in different tissues. Alternative splicing generates additional isoforms of each of the five growth hormones, leading to further diversity and potential for specialization. This particular family member is expressed mainly in the placenta and utilizes multiple transcription initiation sites. Expression of the identical mature proteins for chorionic somatomammotropin hormones 1 and 2 is upregulated during development, although the ratio of 1 to 2 increases by term. Mutations in this gene result in placental lactogen deficiency and Silver-Russell syndrome.

Immunogen information

Gene ID:

1442

Uniprot

PODML2

Synonyms:

CSH1; CS-1; CSA; CSMT; GHB3; PL; hCS-1; hCS-A

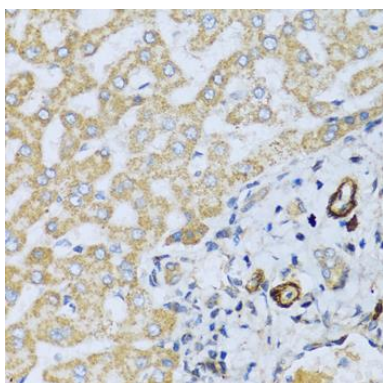
Immunogen:

Recombinant fusion protein containing a sequence corresponding to amino acids 27-217 of human CSH1 (NP_001308.1).

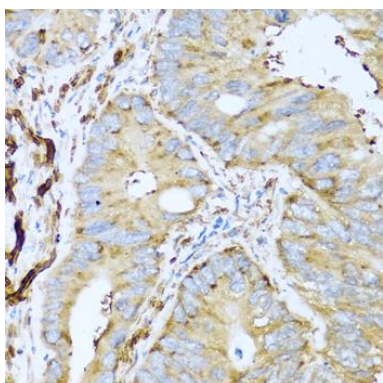
Storage:

Store at -20°C. Avoid freeze / thaw cycles. Buffer: PBS with 0.02% sodium azide, 50% glycerol, pH7.3.

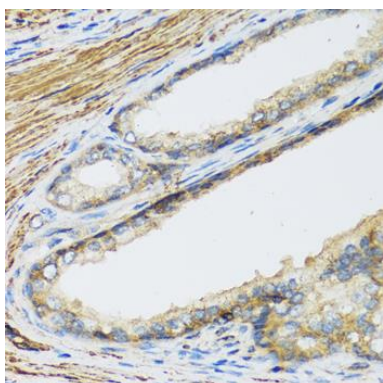
Product Images



Immunohistochemistry of paraffin-embedded human liver using CSH1 antibody (CAB1972) at dilution of 1:100 (40x lens).



Immunohistochemistry of paraffin-embedded human colon carcinoma using CSH1 antibody (CAB1972) at dilution of 1:100 (40x lens).



Immunohistochemistry of paraffin-embedded human prostate using CSH1 antibody (CAB1972) at dilution of 1:100 (40x lens).