

EXT2 Rabbit Polyclonal Antibody



CAB1973

Product Information

Size:

20uL, 50uL, 100uL, 200uL

Observed MW:

82kDa

Calculated MW:

82kDa/83kDa/85kDa

Applications:

WB IF

Reactivity:

Human, Mouse, Rat

Protein Background

This gene encodes one of two glycosyltransferases involved in the chain elongation step of heparan sulfate biosynthesis. Mutations in this gene cause the type II form of multiple exostoses. Alternatively spliced transcript variants encoding different isoforms have been noted for this gene.

Immunogen information

Gene ID:

2132

Uniprot

Q93063

Synonyms:

EXT2; SOTV; SSMS

Antibody Information

Recommended dilutions:

WB 1:500 - 1:2000 IF 1:50 - 1:200

Source:

Rabbit

Isotype:

IgG

Purification:

Affinity purification

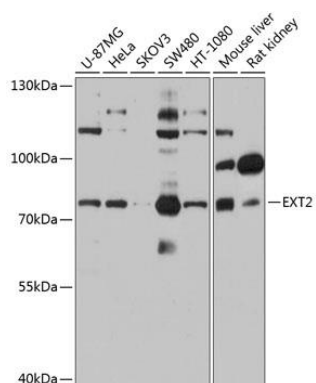
Immunogen:

Recombinant fusion protein containing a sequence corresponding to amino acids 80-340 of human EXT2 (NP_000392.3).

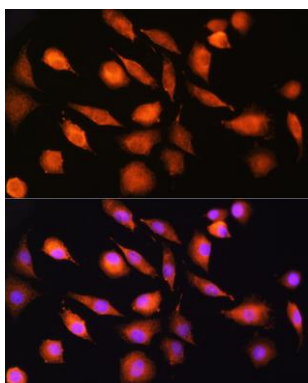
Storage:

Store at -20°C. Avoid freeze / thaw cycles. Buffer: PBS with 0.02% sodium azide, 50% glycerol, pH7.3.

Product Images



Western blot analysis of extracts of various cell lines, using EXT2 antibody (CAB1973) at 1:1000 dilution. Secondary antibody: HRP Goat Anti-Rabbit IgG (H+L) (CABS014) at 1:10000 dilution. Lysates/proteins: 25ug per lane. Blocking buffer: 3% nonfat dry milk in TBST. Detection: ECL Basic Kit (CABM00020). Exposure time: 30s.



Immunofluorescence analysis of L929 cells using EXT2 Rabbit pAb (CAB1973) at dilution of 1:100 (40x lens). Blue: DAPI for nuclear staining.