

KRAS+HRAS+NRAS Rabbit Monoclonal Antibody



CAB19779

Product Information

Size:

20uL, 50uL, 100uL, 200uL

Observed MW:

21KDa

Calculated MW:

21kDa

Applications:

WB IF

Reactivity:

Human, Mouse, Rat

Antibody Information

Recommended dilutions:

WB 1:500 - 1:2000 IF 1:50 - 1:200

Source:

Rabbit

Isotype:

IgG

Purification:

Affinity purification

Protein Background

This gene, a Kirsten ras oncogene homolog from the mammalian ras gene family, encodes a protein that is a member of the small GTPase superfamily. A single amino acid substitution is responsible for an activating mutation. The transforming protein that results is implicated in various malignancies, including lung adenocarcinoma, mucinous adenoma, ductal carcinoma of the pancreas and colorectal carcinoma. Alternative splicing leads to variants encoding two isoforms that differ in the C-terminal region. [provided by RefSeq, Jul 2008]

Immunogen information

Gene ID:

3845/3265/3845

Uniprot

P01111/P01112/P01116

Synonyms:

C-K-RAS; CFC2; K-RAS2A; K-RAS2B; K-RAS4A; K-RAS4B; KI-RAS; KRAS1; KRAS2; NS; NS3; RALD; RASK2; c-Ki-ras2

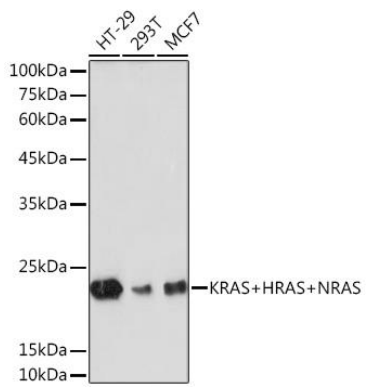
Immunogen:

A synthesized peptide derived from human KRAS+HRAS+NRAS

Storage:

Store at -20°C. Avoid freeze / thaw cycles. Buffer: PBS with 0.02% sodium azide, 0.05% BSA, 50% glycerol, pH7.3.

Product Images



Western blot - KRAS+HRAS+NRAS Rabbit mAb (CAB19779)