

[KO Validated] ATG4A Rabbit Polyclonal Antibody

CAB19844



Product Information

Size:

20uL, 50uL, 100uL, 200uL

Observed MW:

50kDa

Calculated MW:

36kDa/38kDa/42kDa/45kDa

Applications:

WB

Reactivity:

Human, Mouse

Antibody Information

Recommended dilutions:

WB 1:500 - 1:2000

Source:

Rabbit

Isotype:

IgG

Purification:

Affinity purification

Protein Background

Autophagy is the process by which endogenous proteins and damaged organelles are destroyed intracellularly. Autophagy is postulated to be essential for cell homeostasis and cell remodeling during differentiation, metamorphosis, non-apoptotic cell death, and aging. Reduced levels of autophagy have been described in some malignant tumors, and a role for autophagy in controlling the unregulated cell growth linked to cancer has been proposed. This gene encodes a member of the autophagin protein family. The encoded protein is also designated as a member of the C-54 family of cysteine proteases.

Immunogen information

Gene ID:

115201

Uniprot

Q8WYN0

Synonyms:

ATG4A; APG4A; AUTL2

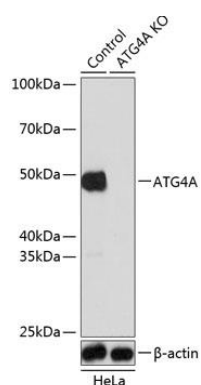
Immunogen:

Recombinant protein of human ATG4A.

Storage:

Store at -20°C. Avoid freeze / thaw cycles. Buffer: PBS with 0.02% sodium azide, 50% glycerol, pH7.3.

Product Images



Western blot analysis of extracts from normal (control) and ATG4A knockout (KO) HeLa cells, using ATG4A antibody (CAB19844) at 1:1000 dilution. Secondary antibody: HRP Goat Anti-Rabbit IgG (H+L) (CABS014) at 1:10000 dilution. Lysates/proteins: 25ug per lane. Blocking buffer: 3% nonfat dry milk in TBST. Detection: ECL Basic Kit (CABM00020). Exposure time: 5s.