

[KO Validated] SERPINB5 Rabbit Polyclonal Antibody

CAB19847



Product Information

Size:

20uL, 50uL, 100uL, 200uL

Observed MW:

42KDa

Calculated MW:

25kDa/42kDa

Applications:

WB IHC

Reactivity:

Human, Mouse

Antibody Information

Recommended dilutions:

WB 1:500 - 1:2000 IHC 1:50
- 1:200

Source:

Rabbit

Isotype:

IgG

Purification:

Affinity purification

Protein Background

Immunogen information

Gene ID:

5268

Uniprot

P36952

Synonyms:

SERPINB5; PI5; maspin; serpin B5

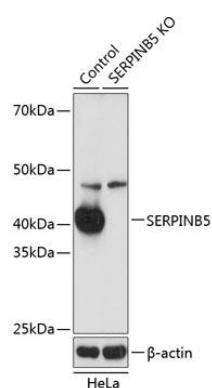
Immunogen:

Recombinant protein of human SERPINB5.

Storage:

Store at -20°C. Avoid freeze / thaw cycles. Buffer: PBS with 0.02% sodium azide, 50% glycerol, pH7.3.

Product Images



Western blot analysis of extracts from normal (control) and SERPINB5 knockout (KO) HeLa cells, using SERPINB5 antibody (CAB19847) at 1:1000 dilution. Secondary antibody: HRP Goat Anti-Rabbit IgG (H+L) (CABS014) at 1:10000 dilution. Lysates/proteins: 25ug per lane. Blocking buffer: 3% nonfat dry milk in TBST. Detection: ECL Basic Kit (CABM00020). Exposure time: 5s.