

# [KO Validated] SERPINB5 Rabbit Polyclonal Antibody

CAB19848



## Product Information

### Size:

20uL, 50uL, 100uL, 200uL

### Observed MW:

42KDa

### Calculated MW:

25kDa/42kDa

### Applications:

WB

### Reactivity:

Human, Mouse

## Antibody Information

### Recommended dilutions:

WB 1:500 - 1:2000

### Source:

Rabbit

### Isotype:

IgG

### Purification:

Affinity purification

## Protein Background

### Immunogen information

#### Gene ID:

5268

#### Uniprot

P36952

#### Synonyms:

SERPINB5; PI5; maspin; serpin B5

#### Immunogen:

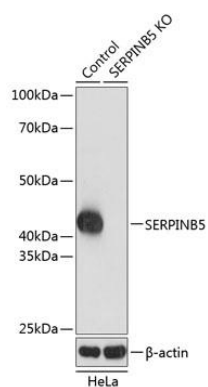
Recombinant protein of human SERPINB5.

#### Storage:

Store at -20°C. Avoid freeze / thaw cycles. Buffer: PBS with 0.02% sodium azide, 50% glycerol, pH7.3.

## Product Images

---



Western blot analysis of extracts from normal (control) and SERPINB5 knockout (KO) HeLa cells, using SERPINB5 antibody (CAB19848) at 1:1000 dilution. Secondary antibody: HRP Goat Anti-Rabbit IgG (H+L) (CABS014) at 1:10000 dilution. Lysates/proteins: 25ug per lane. Blocking buffer: 3% nonfat dry milk in TBST. Detection: ECL Basic Kit (CABM00020). Exposure time: 5s.