

**[KO Validated] ANXA3 Rabbit Polyclonal
Antibody
CAB19862**



Product Information

Size:

20uL, 50uL, 100uL, 200uL

Observed MW:

34KDa

Calculated MW:

36kDa

Applications:

WB IF

Reactivity:

Human, Mouse, Rat

Protein Background

This gene encodes a member of the annexin family. Members of this calcium-dependent phospholipid-binding protein family play a role in the regulation of cellular growth and in signal transduction pathways. This protein functions in the inhibition of phospholipase A2 and cleavage of inositol 1, 2-cyclic phosphate to form inositol 1-phosphate. This protein may also play a role in anti-coagulation.

Immunogen information

Gene ID:

306

Uniprot

P12429

Synonyms:

ANXA3; ANX3

Antibody Information

Recommended dilutions:

WB 1:500 - 1:2000 IF 1:50 - 1:200

Source:

Rabbit

Isotype:

IgG

Purification:

Affinity purification

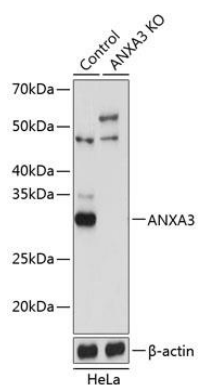
Immunogen:

Recombinant protein of human ANXA3.

Storage:

Store at -20°C. Avoid freeze / thaw cycles. Buffer: PBS with 0.02% sodium azide, 50% glycerol, pH7.3.

Product Images



Western blot analysis of extracts from normal (control) and ANXA3 knockout (KO) HeLa cells, using ANXA3 antibody (CAB19862) at 1:3000 dilution. Secondary antibody: HRP Goat Anti-Rabbit IgG (H+L) (CABS014) at 1:10000 dilution. Lysates/proteins: 25ug per lane. Blocking buffer: 3% nonfat dry milk in TBST. Detection: ECL Basic Kit (CABM00020). Exposure time: 1s.