

# [KO Validated] FKBP10 Rabbit Polyclonal Antibody

## CAB19870



### Product Information

**Size:**

20uL, 50uL, 100uL, 200uL

**Observed MW:**

75KDa

**Calculated MW:**

38kDa/64kDa

**Applications:**

WB IHC

**Reactivity:**

Human, Mouse

### Protein Background

The protein encoded by this gene belongs to the FKBP-type peptidyl-prolyl cis/trans isomerase (PPIase) family. This protein localizes to the endoplasmic reticulum and acts as a molecular chaperone. Alternatively spliced variants encoding different isoforms have been reported, but their biological validity has not been determined.

### Immunogen information

**Gene ID:**

60681

**Uniprot**

Q96AY3

**Synonyms:**

FKBP10; BRKS1; FKBP65; OI11; OI6; PPIASE; hFKBP65

### Antibody Information

**Recommended dilutions:**

WB 1:500 - 1:2000 IHC 1:50  
- 1:200

**Source:**

Rabbit

**Isotype:**

IgG

**Purification:**

Affinity purification

**Immunogen:**

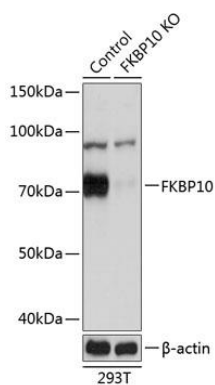
Recombinant protein of human FKBP10.

**Storage:**

Store at -20°C. Avoid freeze / thaw cycles. Buffer: PBS with 0.02% sodium azide, 50% glycerol, pH7.3.

## Product Images

---



Western blot analysis of extracts from normal (control) and FKBP10 knockout (KO) 293T cells, using FKBP10 antibody (CAB19870) at 1:3000 dilution. Secondary antibody: HRP Goat Anti-Rabbit IgG (H+L) (CABS014) at 1:10000 dilution. Lysates/proteins: 25ug per lane. Blocking buffer: 3% nonfat dry milk in TBST. Detection: ECL Basic Kit (CABM00020). Exposure time: 1S.