

# [KO Validated] HIBADH Rabbit Polyclonal Antibody

CAB19871



## Product Information

### Size:

20uL, 50uL, 100uL, 200uL

### Observed MW:

32KDa

### Calculated MW:

35kDa

### Applications:

WB IF

### Reactivity:

Human, Mouse, Rat

## Protein Background

This gene encodes a mitochondrial 3-hydroxyisobutyrate dehydrogenase enzyme. The encoded protein plays a critical role in the catabolism of L-valine by catalyzing the oxidation of 3-hydroxyisobutyrate to methylmalonate semialdehyde.

## Immunogen information

### Gene ID:

11112

### Uniprot

P31937

### Synonyms:

HIBADH; NS5ATP1

## Antibody Information

### Recommended dilutions:

WB 1:1000 - 1:3000 IF 1:50 - 1:200

### Source:

Rabbit

### Isotype:

IgG

### Purification:

Affinity purification

### Immunogen:

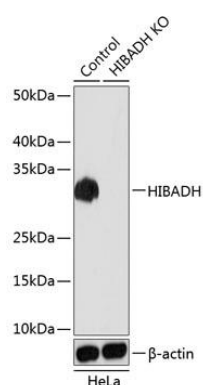
Recombinant protein of human HIBADH.

### Storage:

Store at -20°C. Avoid freeze / thaw cycles. Buffer: PBS with 0.02% sodium azide, 50% glycerol, pH7.3.

## Product Images

---



Western blot analysis of extracts from normal (control) and HIBADH knockout (KO) HeLa cells, using HIBADH antibody (CAB19871) at 1:3000 dilution. Secondary antibody: HRP Goat Anti-Rabbit IgG (H+L) (CABS014) at 1:10000 dilution. Lysates/proteins: 25ug per lane. Blocking buffer: 3% nonfat dry milk in TBST. Detection: ECL Basic Kit (CABM00020). Exposure time: 1s.