

# [KO Validated] NANS Rabbit Polyclonal Antibody



CAB19875

## Product Information

### Size:

20uL, 50uL, 100uL, 200uL

### Observed MW:

40kDa

### Calculated MW:

40kDa

### Applications:

WB

### Reactivity:

Human

## Antibody Information

### Recommended dilutions:

WB 1:500 - 1:2000

### Source:

Rabbit

### Isotype:

IgG

### Purification:

Affinity purification

## Protein Background

This gene encodes an enzyme that functions in the biosynthetic pathways of sialic acids. In vitro, the encoded protein uses N-acetylmannosamine 6-phosphate and mannose 6-phosphate as substrates to generate phosphorylated forms of N-acetylneuraminic acid (Neu5Ac) and 2-keto-3-deoxy-D-glycero-D-galacto-nononic acid (KDN), respectively; however, it exhibits much higher activity toward the Neu5Ac phosphate product. In insect cells, expression of this gene results in Neu5Ac and KDN production. This gene is related to the E. coli sialic acid synthase gene neuB, and it can partially restore sialic acid synthase activity in an E. coli neuB-negative mutant.

## Immunogen information

### Gene ID:

54187

### Uniprot

Q9NR45

### Synonyms:

NANS; HEL-S-100; SAS; SEMDCG; SEMDG

### Immunogen:

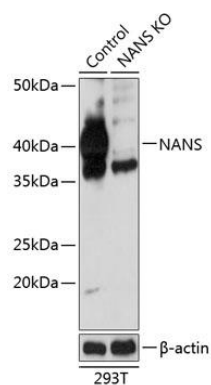
Recombinant protein of human NANS.

### Storage:

Store at -20°C. Avoid freeze / thaw cycles. Buffer: PBS with 0.02% sodium azide, 50% glycerol, pH7.3.

## Product Images

---



Western blot analysis of extracts from normal (control) and NANS knockout (KO) 293T cells, using NANS antibody (CAB19875) at 1:1000 dilution. Secondary antibody: HRP Goat Anti-Rabbit IgG (H+L) (CABS014) at 1:10000 dilution. Lysates/proteins: 25ug per lane. Blocking buffer: 3% nonfat dry milk in TBST. Detection: ECL Basic Kit (CABM00020). Exposure time: 1s.