

# [KO Validated] GANAB Rabbit Polyclonal Antibody

## CAB19876



### Product Information

**Size:**

20uL, 50uL, 100uL, 200uL

**Observed MW:**

98kDa

**Calculated MW:**

5kDa/106kDa/109kDa

**Applications:**

WB IHC IF

**Reactivity:**

Human, Mouse, Rat

### Protein Background

This gene encodes the alpha subunit of glucosidase II and a member of the glycosyl hydrolase 31 family of proteins. The heterodimeric enzyme glucosidase II plays a role in protein folding and quality control by cleaving glucose residues from immature glycoproteins in the endoplasmic reticulum. Expression of the encoded protein is elevated in lung tumor tissue and in response to UV irradiation. Mutations in this gene cause autosomal-dominant polycystic kidney and liver disease.

### Immunogen information

**Gene ID:**

23193

**Uniprot**

Q14697

**Synonyms:**

GANAB; G2AN; GIIA; GLUII; PKD3

### Antibody Information

**Recommended dilutions:**

WB 1:500 - 1:2000 IHC 1:50  
- 1:200 IF 1:50 - 1:200

**Source:**

Rabbit

**Isotype:**

IgG

**Purification:**

Affinity purification

**Immunogen:**

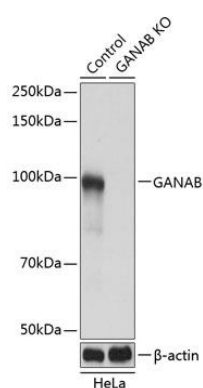
Recombinant protein of human GANAB.

**Storage:**

Store at -20°C. Avoid freeze / thaw cycles. Buffer: PBS with 0.02% sodium azide, 50% glycerol, pH7.3.

## Product Images

---



Western blot analysis of extracts from normal (control) and GANAB knockout (KO) HeLa cells, using GANAB antibody (CAB19876) at 1:3000 dilution. Secondary antibody: HRP Goat Anti-Rabbit IgG (H+L) (CABS014) at 1:10000 dilution. Lysates/proteins: 25ug per lane. Blocking buffer: 3% nonfat dry milk in TBST. Detection: ECL Basic Kit (CABM00020). Exposure time: 1S.